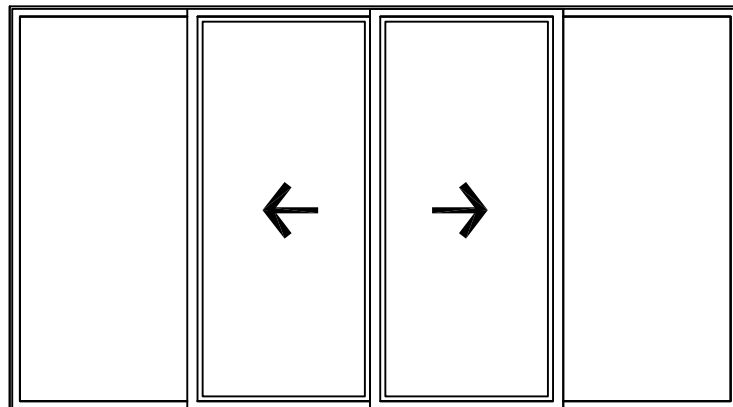


INSTALLATION OF MAINFRAME

- * Ensure door is installed level, square and plumb.
- * Measure diagonal to check squareness.
- * Reference Starline banner for balance of recommended door installation instructions. (i.e shimming)
- * On jambs fasten using roofing nails NOT screws (see 8500 fastening instructions).
- * Use head retainer clips for the head of the door, do not put any nails or screws through the top nailing flange.



INSTALLATION OF SLIDERS

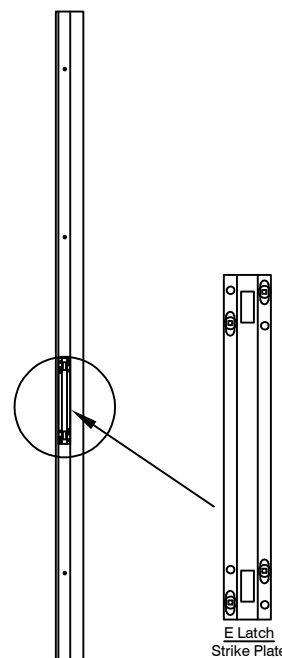
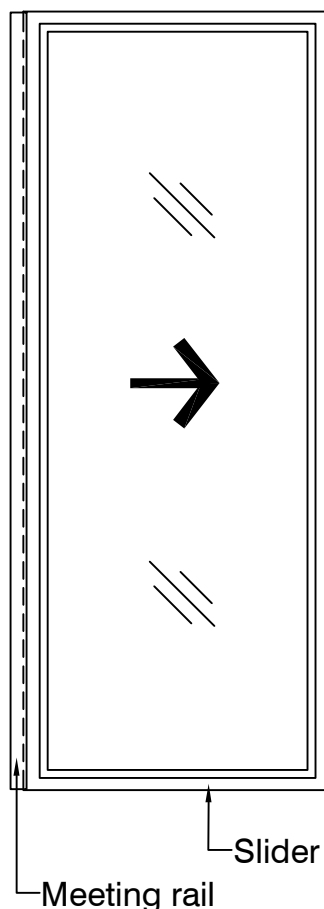
- * Insert head of secondary slider into slider pocket at head of door.
- * While simultaneously lifting meeting rail up, pivot bottom of slider into bottom slider pocket.
- * Adjust slider wheels of primary & secondary sliders until optimum location is achieved (centered vertically on door).

**** Note: It's imperative that floor/sill is properly shimmed and is 100% level.****

SECONDARY SLIDER (8' height)

Side View
(outside view)

End View
(inside w/ meeting rail)



INSTALLATION OF SCREEN DOOR

- * Install both screen doors by first inserting into header screen pocket (screen with meeting rail should be on right side).
- * To assist in the install, you may use a putty knife to retract and lift the lower wheel assembly over the screen track pocket.
- * Once installed adjust accordingly. Adjustment screws are located on the side /bottom of screen door.
- * Once the door is adjusted, top wheels should be adjusted with light tension to avoid rocking

Adjustment Screws

STARLINE WINDOWS

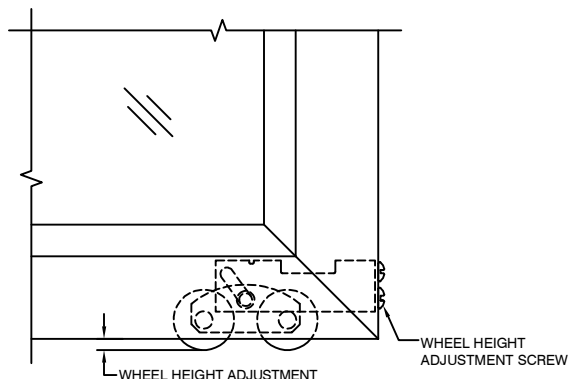
8500 SERIES TIPS FOR INSTALLATION AND ADJUSTMENTS

2 & 3 Panel Vista- Reference this page.

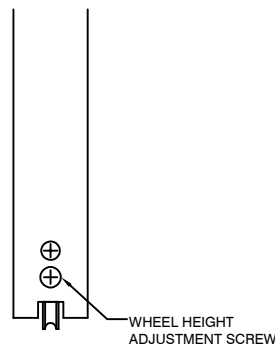
4 Panel Grandview- See reverse side for additional information.

1. WHEEL ASSEMBLY ADJUSTMENTS

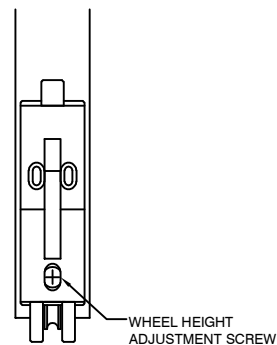
- * Use a #2 Phillips or #2 Robertson screwdriver to turn adjustment screw.
- * To raise panel, turn wheel adjustment screw clockwise.
- * To lower panel, turn wheel adjustment screw counter-clockwise.
- * Adjust panels to maintain even sightline
- * Raise panel enough so that the foot lock doesn't bottom out and door panel slides freely on track and are square to the jamb. Optimally, panel should be centered vertically.



FRONT VIEW

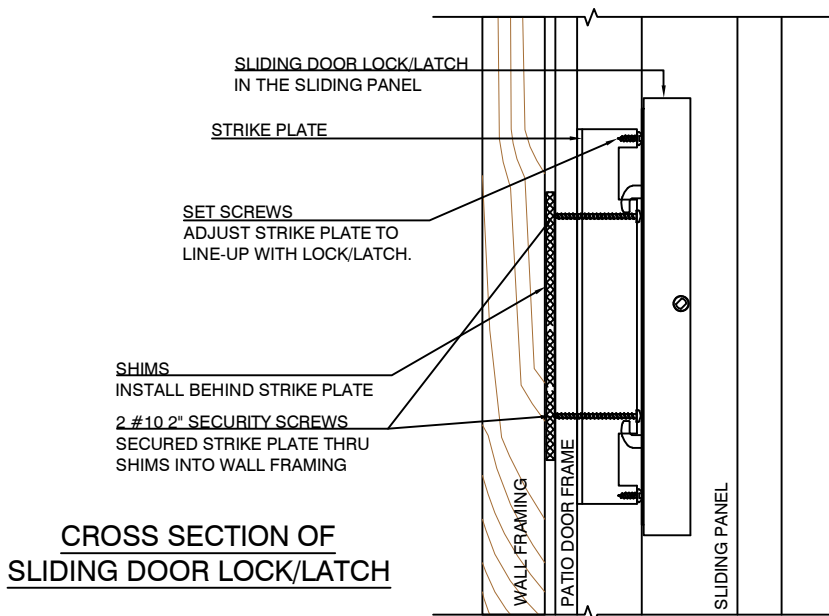


EDGE VIEW #1



EDGE VIEW #2
WITH FOOT LOCK

2. STRIKE PLATE AND LOCK ADJUSTMENTS



NOTE:

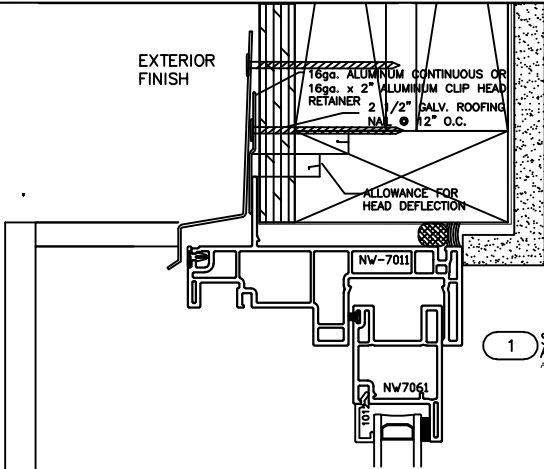
FOR CONTINUED HIGH PERFORMANCE:

*KEEP TRACK CLEAN OF ANY DEBRIS.

*USE A MILD SOAP AND WARM WATER SOLUTION FOR CLEANING

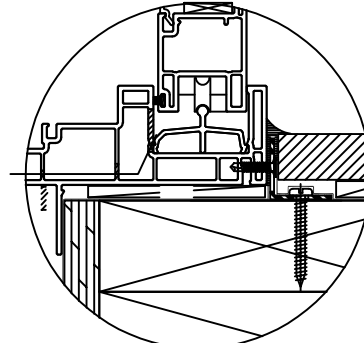
*AVOID USING ABRASIVE CLEANERS OR MATERIALS.

VISTA AND GRANDVIEW DOOR FASTENING GUIDE

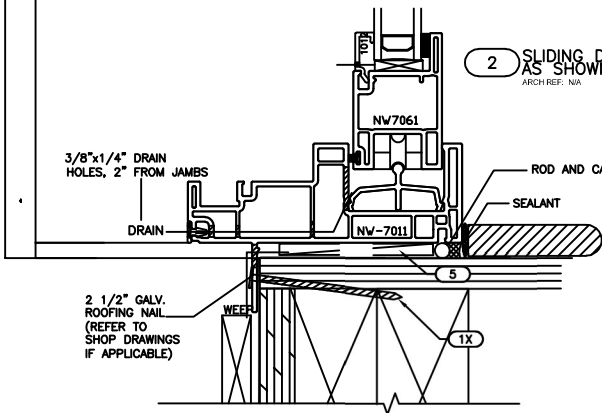


① SLIDING DOOR HEAD

① SLIDING DOOR HEAD AS SHOWN
ARCH REF: N/A

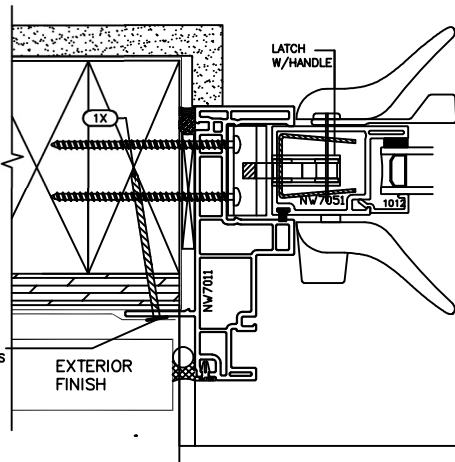


ALTERNATIVE FASTENING
DETAIL FOR SILL



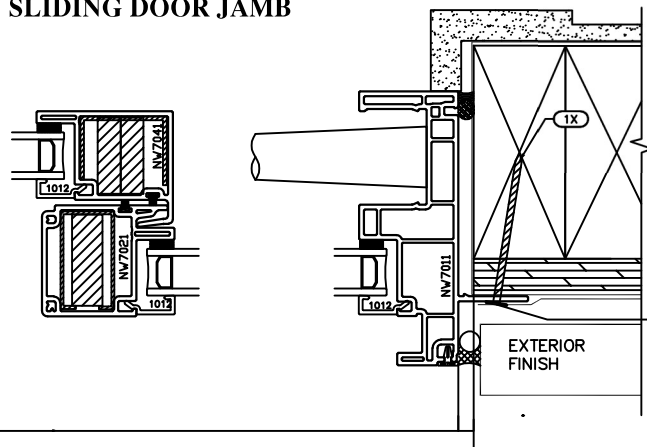
② SLIDING DOOR SILL AS SHOWN
ARCH REF: N/A

② SLIDING DOOR SILL



③ SLIDING DOOR JAMB W/ VENT AS SHOWN
ARCH REF: N/A

③ SLIDING DOOR JAMB



3A SLIDING DOOR JAMB W/ FIXED LITE AS SHOWN
ARCH REF: N/A

NOTE: STRUCTURAL FASTENING DETAILS **DO NOT** SUPERCEDE SHOP DRAWINGS AND ARE TO BE USED AS A GENERAL GUIDE ONLY. ADDITIONAL FASTENING MAY BE REQUIRED FOR OVERSIZED FRAMES OR HEAVIER GLAZING.

WHERE INTENDED INSTALLATION METHOD IS SIGNIFICANTLY DIFFERENT, PLEASE CONTACT STARLINE BEFORE YOU BEGIN WORK.

* SCREWS, INSTALLATION ANGLES, SHIMS, ETC. ARE NOT SUPPLIED BY STARLINE UNLESS OTHERWISE STATED IN CONTRACT DOCUMENTS.