

Starline manufactures aluminum horizontal and vertical mullion extensions. These mullion extensions are post installed in the field after the window and door modules have been installed.

The mullion extensions are extruded from aluminum 6063 alloy, T5 temper with a minimum thickness of 0.064".

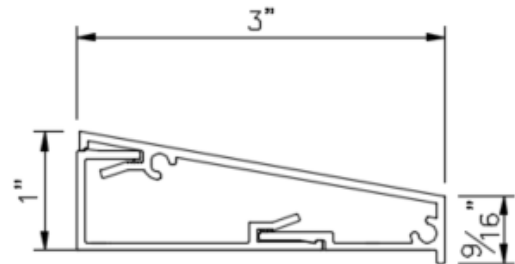
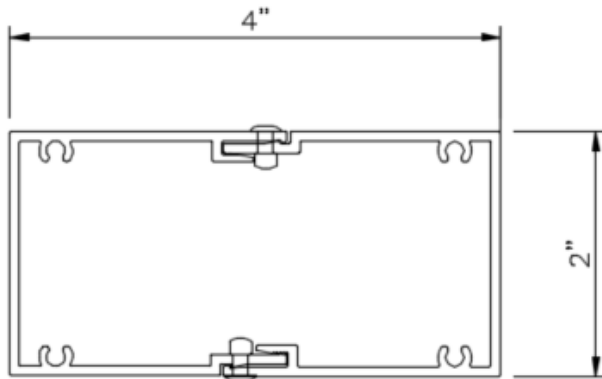
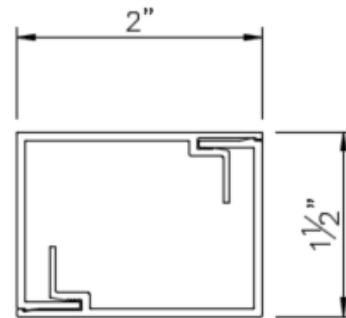
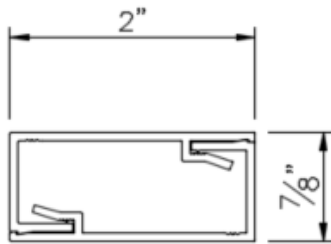
Refer to detail pages 9.1 – 9.5 for the horizontal and vertical mullion extension details showing extensions attached to Starline's 9000 Series (4 1/2" deep) and 9600 Series (6" deep) window wall systems.

Note: Custom horizontal and vertical mullion extensions can be reviewed on a project specific basis.

Horizontal Mullion Extensions

Starline manufactures horizontal mullion extensions in the following sizes (projection x depth):

- 2" x 7/8"
- 2" x 1 1/2"
- 4" x 2"
- 3" x 1" tapered to 9/16"

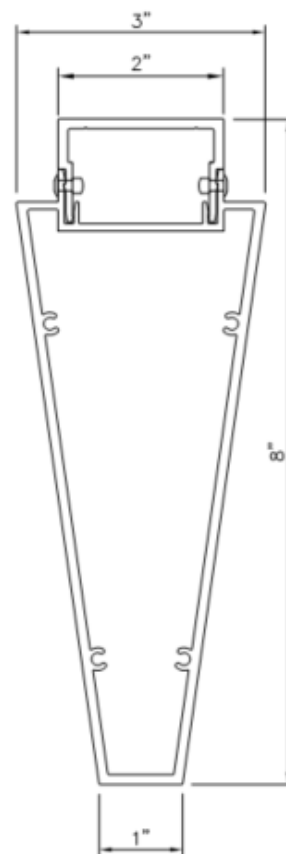
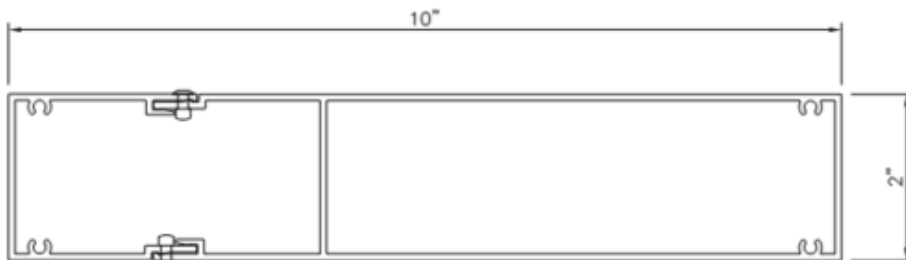
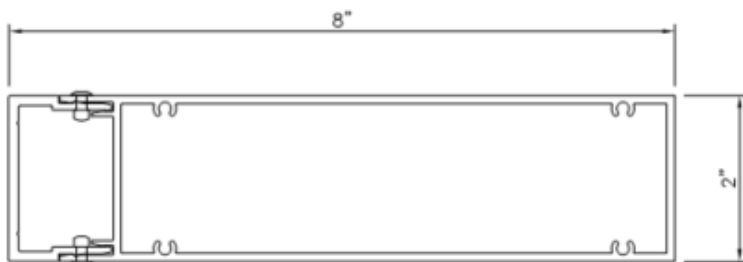
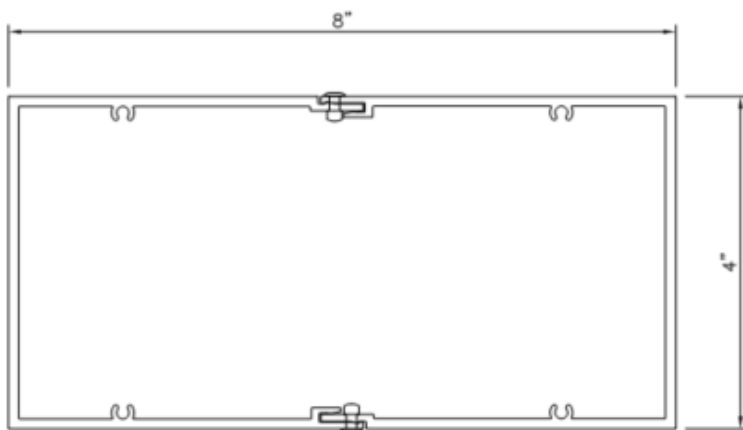
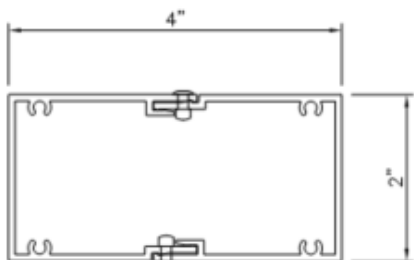


The horizontal mullion extensions can be attached to the horizontal T-Bar, sill and / or bypass sill.

Vertical Mullion Extensions

Starline manufactures vertical mullion extensions in the following sizes (projection x width):

- 4" x 2"
- 8" x 4"
- 8" x 2"
- 10" x 2"
- 8" x 3" tapered to 1"



The vertical mullion extension can be attached to the vertical couplers only, and they cannot be attached to the seismic jambs or corner posts.

Mullion Extension Finishes

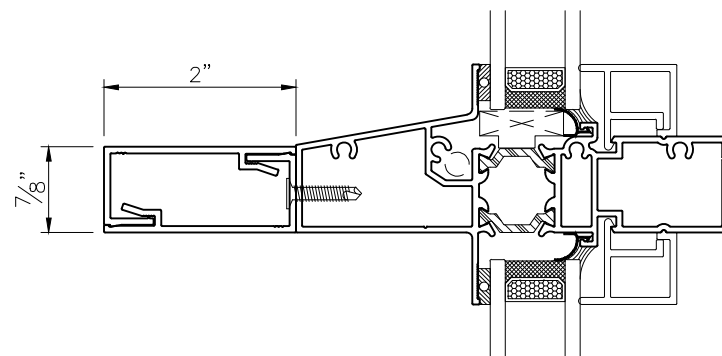
Starline finishes the fins via powder coating. The powder coating is a high-performance thermoset coating specifically designed for architectural systems.

This coating meets and exceeds with The American Architectural Manufacturers Association (AAMA) 2603 specification standard which covers pigmented organic coatings on aluminum extrusions.

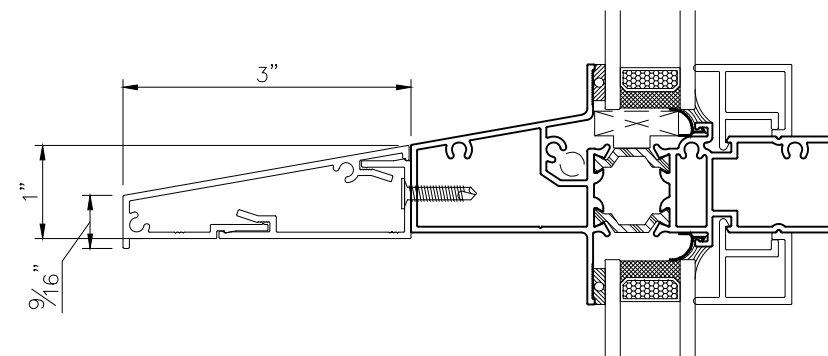
There is an option to upgrade the powder to meet the AAMA 2604 or AAMA 2605 specification on the exterior. Refer to

Refer to the **Aluminum Finishes (Powder Coating)** document in the Miscellaneous section of the catalogue for images of the stock and semi-standard colours available, a comparison of some attributes which are tested for in the AAMA 2603, AAMA 2604 and AAMA 2605 specification standards, information on colour retention, and details to consider when selecting colours.

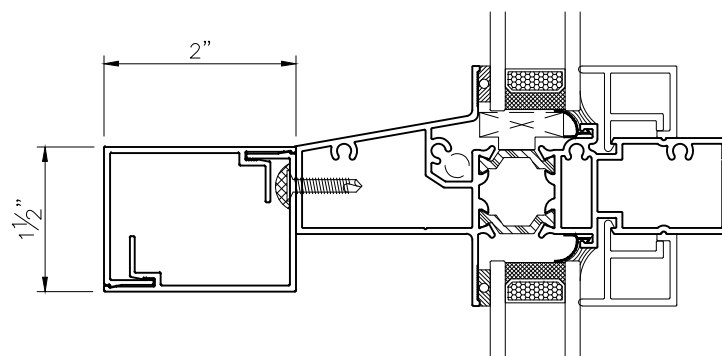
Note: Custom colours and other finishes may be available on a project specific basis.



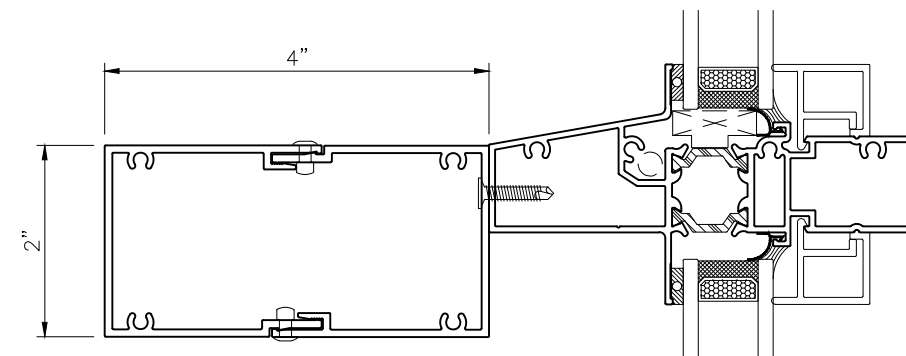
1 9000 SERIES T-BAR WITH
2" X 7/8" HORIZONTAL EXTENSION
ARCH REF: N/A



2 9000 SERIES T-BAR WITH
3" X 1" TAPERED TO 9/16"
HORIZONTAL EXTENSION
ARCH REF: N/A

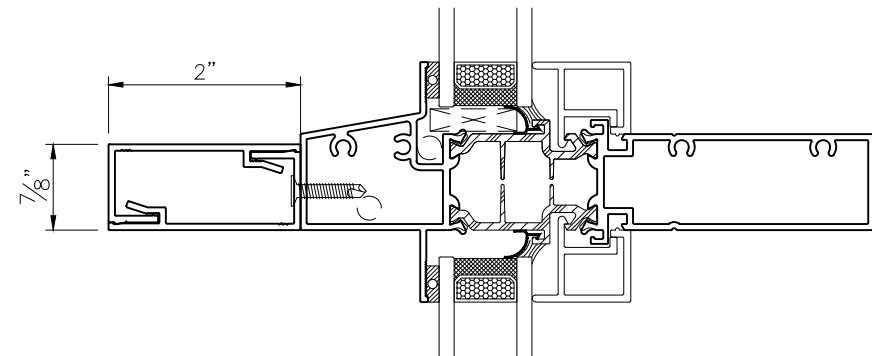


3 9000 SERIES T-BAR WITH
2" X 1 1/2" HORIZONTAL EXTENSION
ARCH REF: N/A

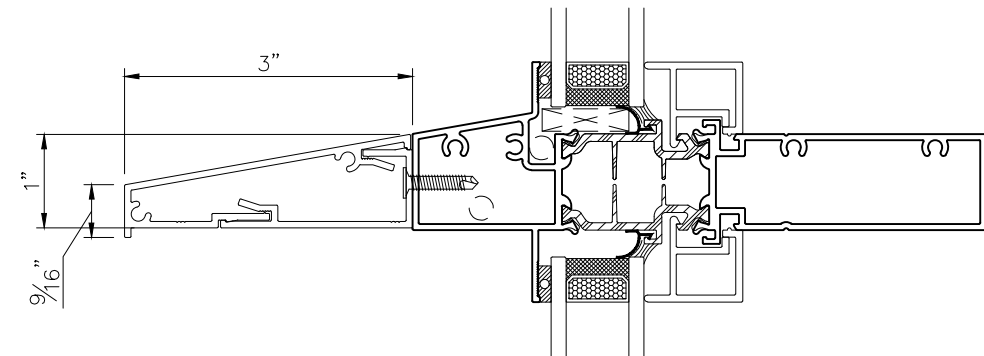


4 9000 SERIES T-BAR WITH
4" X 2" HORIZONTAL EXTENSION
ARCH REF: N/A

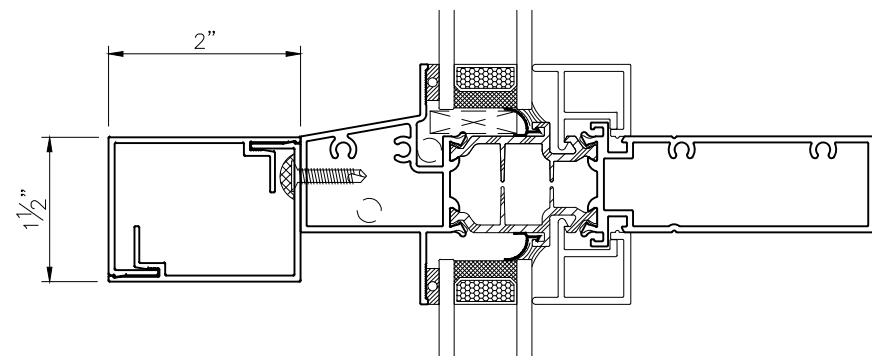
ALL OF THE HORIZONTAL MULLION EXTENSIONS CAN BE ATTACHED TO THE WINDOW WALL HORIZONTAL T-BAR, SILL AND / OR BYPASS SILL MULLIONS. REFER TO DETAIL 1/9.5 SHOWING THE 2" X 7/8" HORIZONTAL EXTENSION ATTACHED TO THE 9000 SERIES FRAMING MEMBERS FOR REFERENCE.



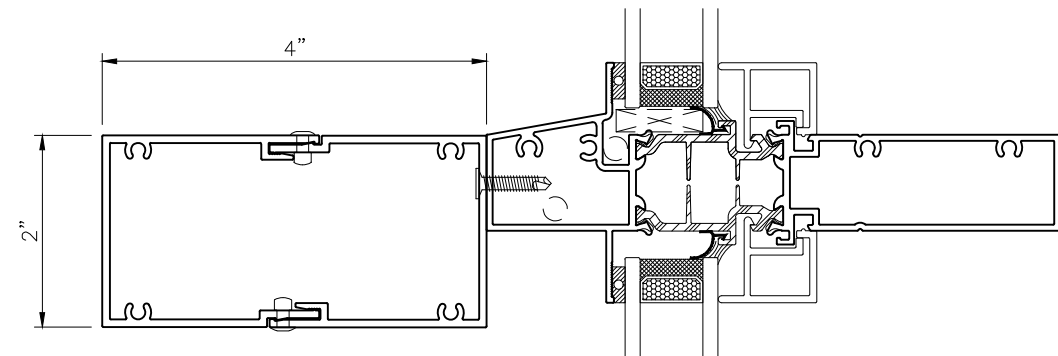
1 9600 SERIES T-BAR WITH
2" X 7/8" HORIZONTAL EXTENSION
ARCH REF: N/A



2 9600 SERIES T-BAR WITH
3" X 1" TAPERED TO 9/16" HORIZONTAL EXTENSION
ARCH REF: N/A

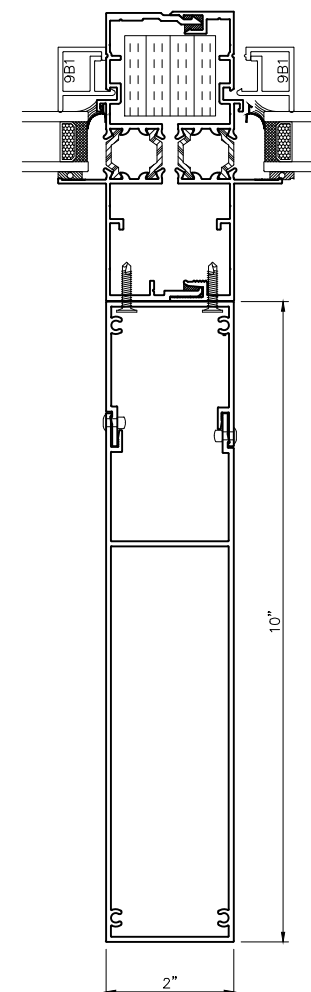
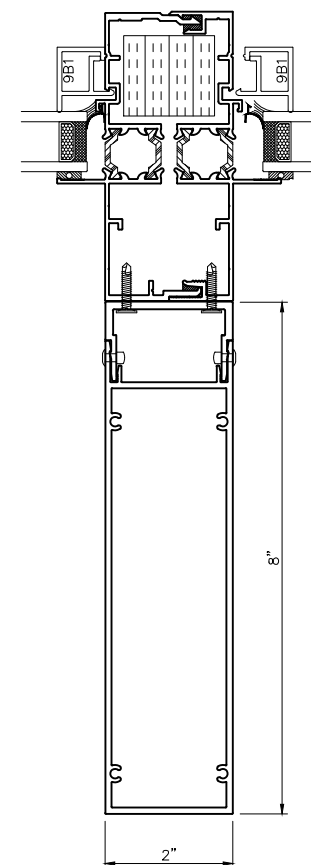
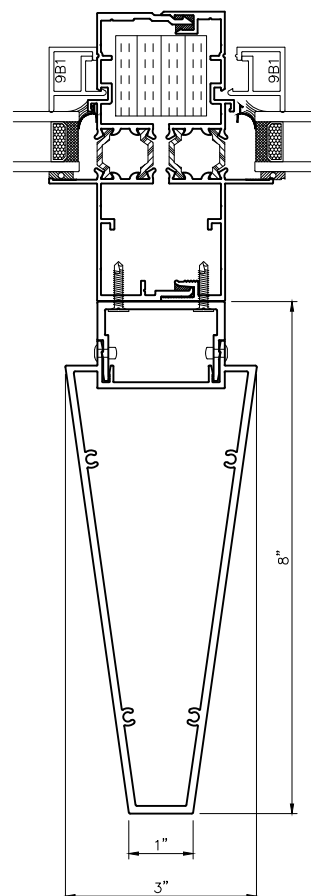
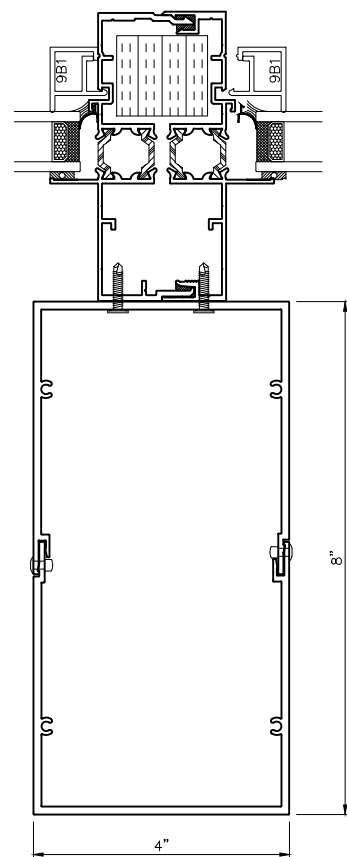
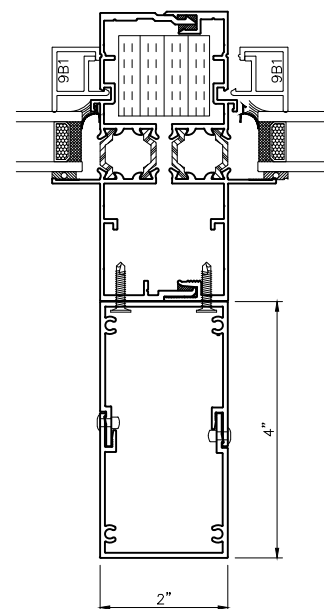


3 9600 SERIES T-BAR WITH
2" X 1 1/2" HORIZONTAL EXTENSION
ARCH REF: N/A



4 9600 SERIES T-BAR WITH
4" X 2" HORIZONTAL EXTENSION
ARCH REF: N/A

ALL OF THE HORIZONTAL MULLION EXTENSIONS CAN BE ATTACHED TO THE WINDOW WALL HORIZONTAL T-BAR, SILL AND / OR BYPASS SILL MULLIONS. REFER TO DETAIL 2/9.5 SHOWING THE 2" X 7/8" HORIZONTAL EXTENSION ATTACHED TO THE 9600 SERIES FRAMING MEMBERS FOR REFERENCE.



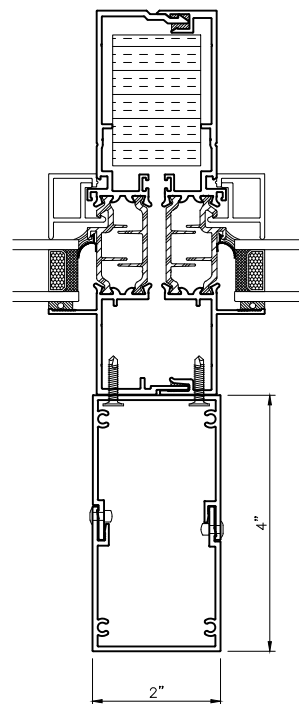
1 9000 SERIES 180° COUPLER WITH
4" X 2" VERTICAL EXTENSION
ARCH REF: N/A

2 9000 SERIES 180° COUPLER WITH
8" X 4" VERTICAL EXTENSION
ARCH REF: N/A

3 9000 SERIES 180° COUPLER WITH
8" X 3" TAPERED TO 1"
VERTICAL EXTENSION
ARCH REF: N/A

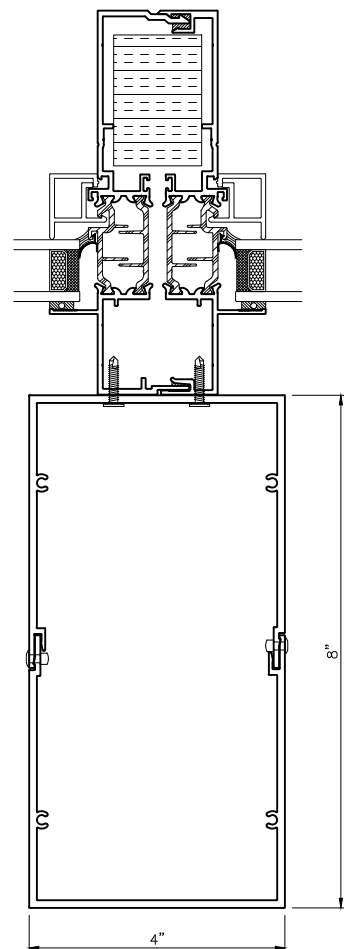
4 9000 SERIES 180° COUPLER WITH
8" X 2" VERTICAL EXTENSION
ARCH REF: N/A

5 9000 SERIES 180° COUPLER WITH
10" X 2" VERTICAL EXTENSION
ARCH REF: N/A



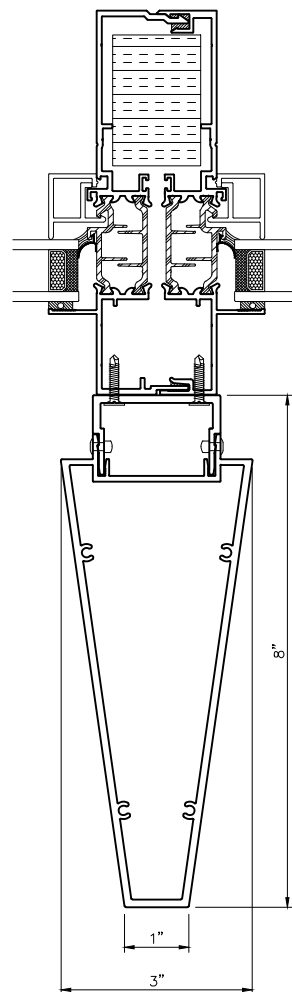
1

9600 SERIES 180° COUPLER WITH
4" X 2" VERTICAL EXTENSION
ARCH REF: N/A



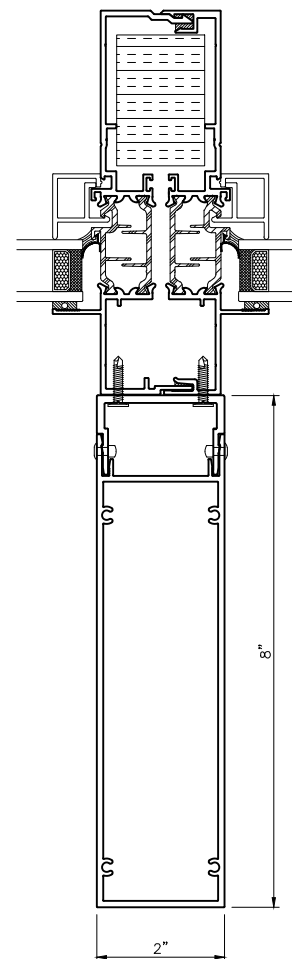
2

9600 SERIES 180° COUPLER WITH
8" X 4" VERTICAL EXTENSION
ARCH REF: N/A



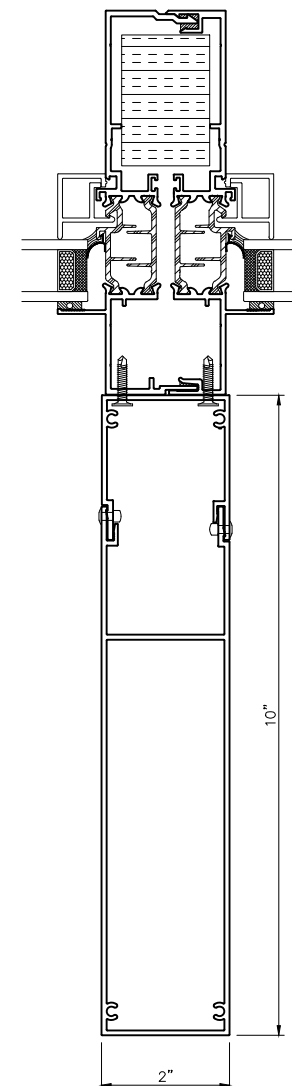
3

9000 SERIES 180° COUPLER WITH
8" X 3" TAPERED TO 1"
VERTICAL EXTENSION
ARCH REF: N/A



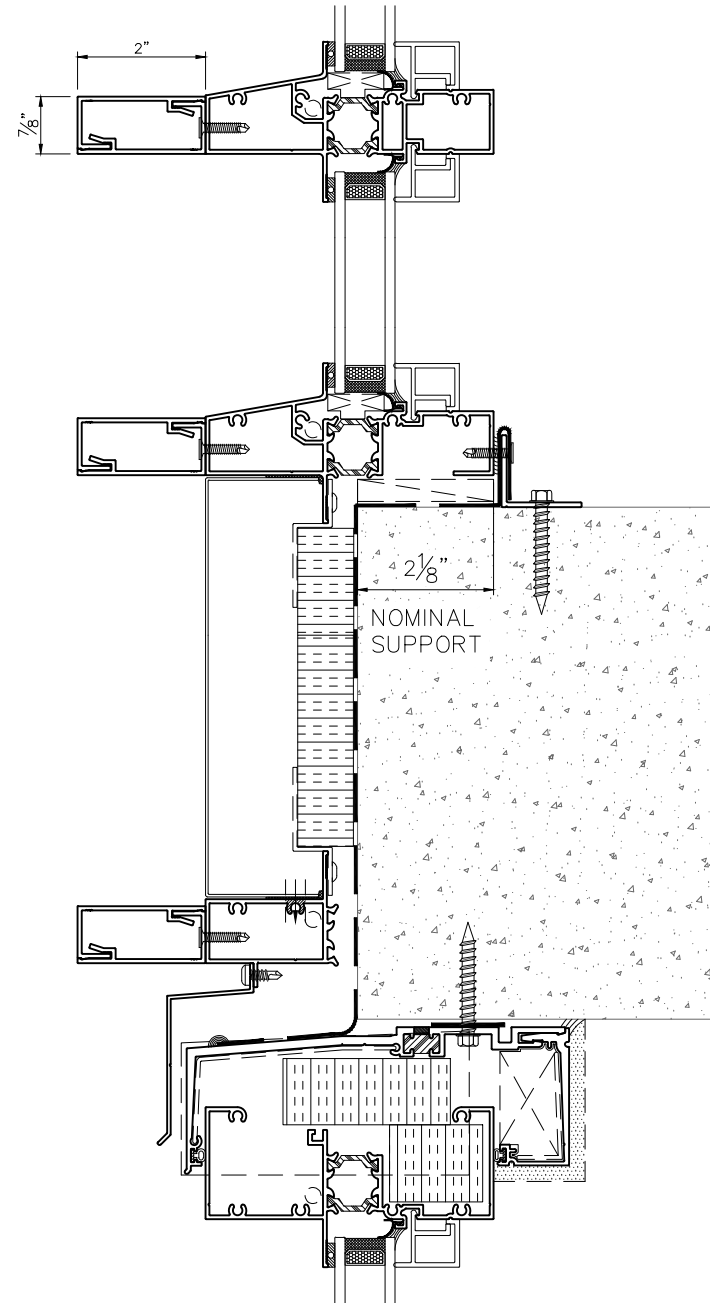
4

9600 SERIES 180° COUPLER WITH
8" X 2" VERTICAL EXTENSION
ARCH REF: N/A

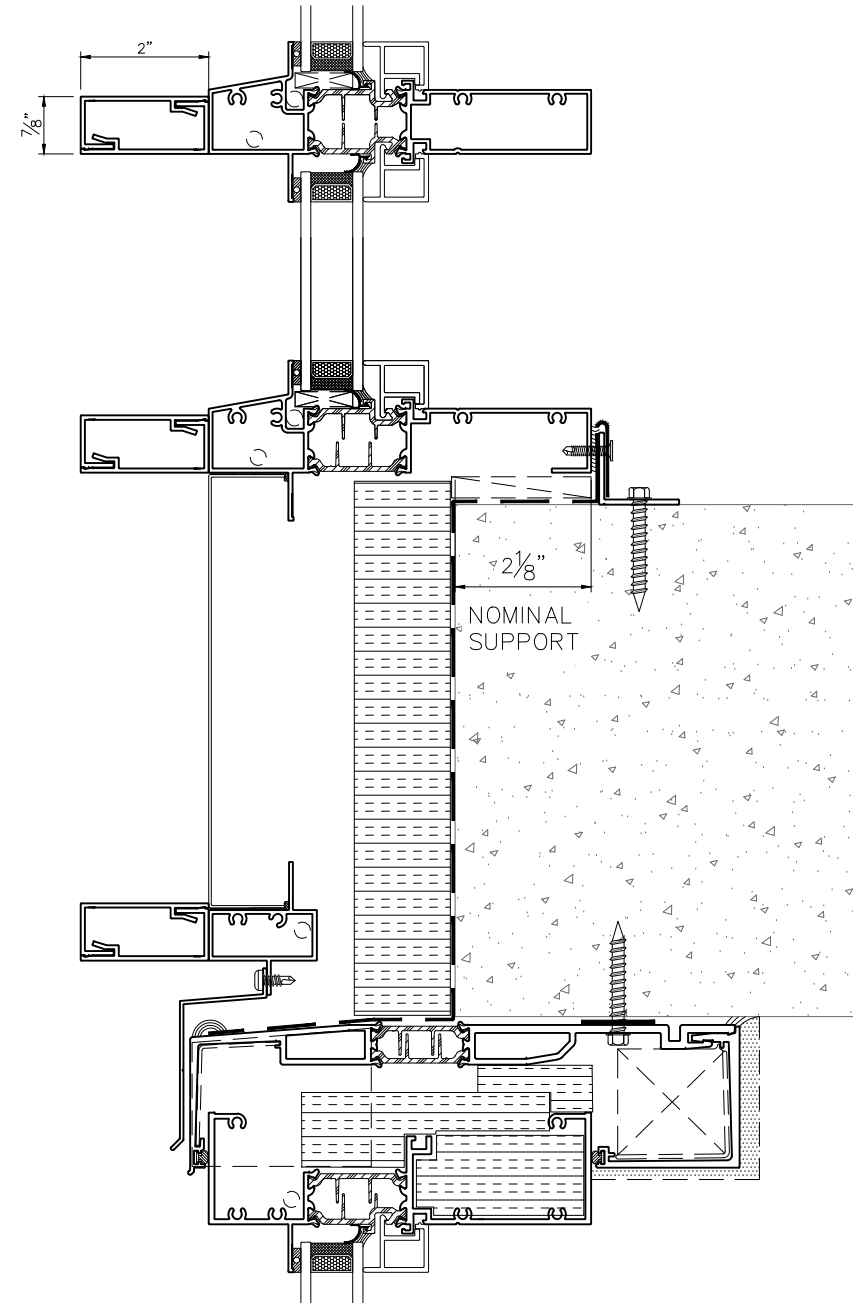


5

9600 SERIES 180° COUPLER WITH
10" X 2" VERTICAL EXTENSION
ARCH REF: N/A



1 9000 SERIES WITH 2" X 7/8" HORIZONTAL MULLION EXTENSIONS
ATTACHED TO THE HORIZONTAL T-BAR, SILL AND BYPASS MULLIONS
ARCH REF: N/A



2 9600 SERIES WITH 2" X 7/8" HORIZONTAL MULLION EXTENSIONS
ATTACHED TO THE HORIZONTAL T-BAR, SILL AND BYPASS MULLIONS
ARCH REF: N/A