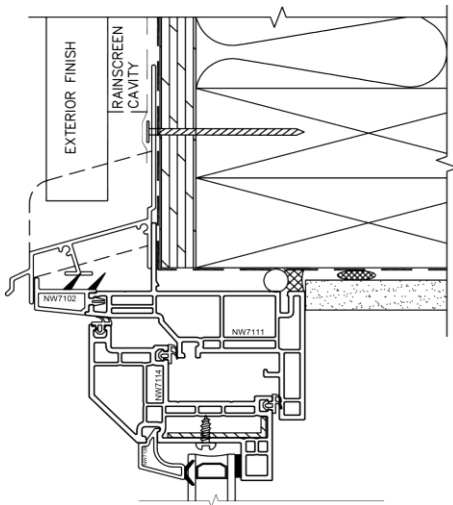


Rainshield

Starline Windows offers the Rainshield system for both residential and low-rise construction depending on project specific needs.

The window frame attachment improves the overall performance of water mitigation and is available in our 6000, 7100, and 8500 series.



IMPROVED FLASHING

The Rainshield system uses extruded aluminum head flashing. The flashing ties in with the building paper and with its end dams, moves all water that arrives at the head of the window out and away from the wall cladding. This water may be from either the equal pressure cavity or on the outside of the sheathing.

INTEGRATED GASKET

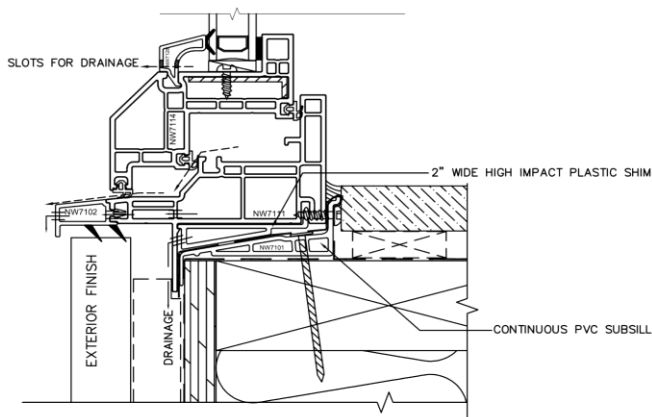
The Rainshield system incorporates a flexible gasket to act as a water barrier between the window frame and building siding. Traditional window systems use a caulking joint which creates a maintenance issue and potential leaking problem for the life of the building.

EXTENDED MAIN FRAME

The size of the main frame has been extended outwards from the nailing flange to equal the depth of the new thicker "rain screen" wall cladding systems.

SUB-SILL

The Rainshield system uses a PVC sub-sill that ties directly into the building envelop with peel & stick membranes. This allows any water that escapes past the outer skin to be directed away from the building structure. This added protection for the building envelope is custom-manufactured for the Rainshield system with Snap-On spacers to offset the outward slope of the sub-sill.



The Starline Rainshield System is designed to be easy to install and maintain. The Rainshield allows the window face to be flush or slightly proud of the finishing trim or material on the exterior. This allows the installer to not have to caulk between the window frame and the wood trim. Envelope consultants are particularly fond of using it on projects as it reduces the need for some flashings.