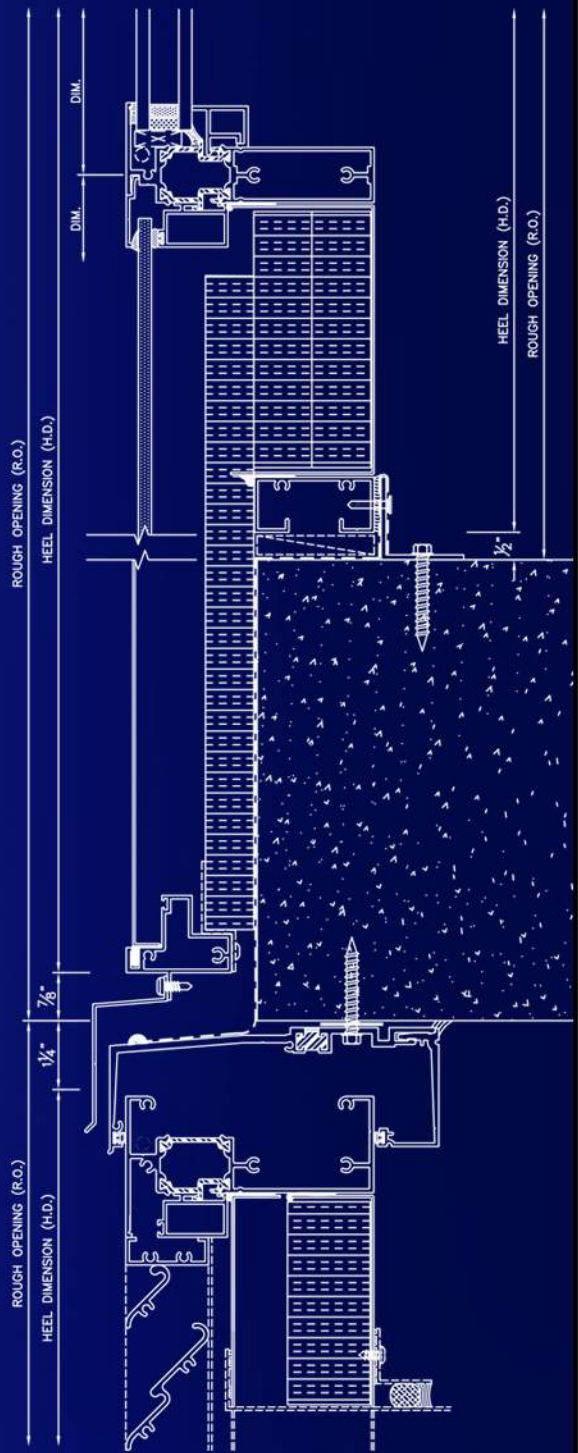
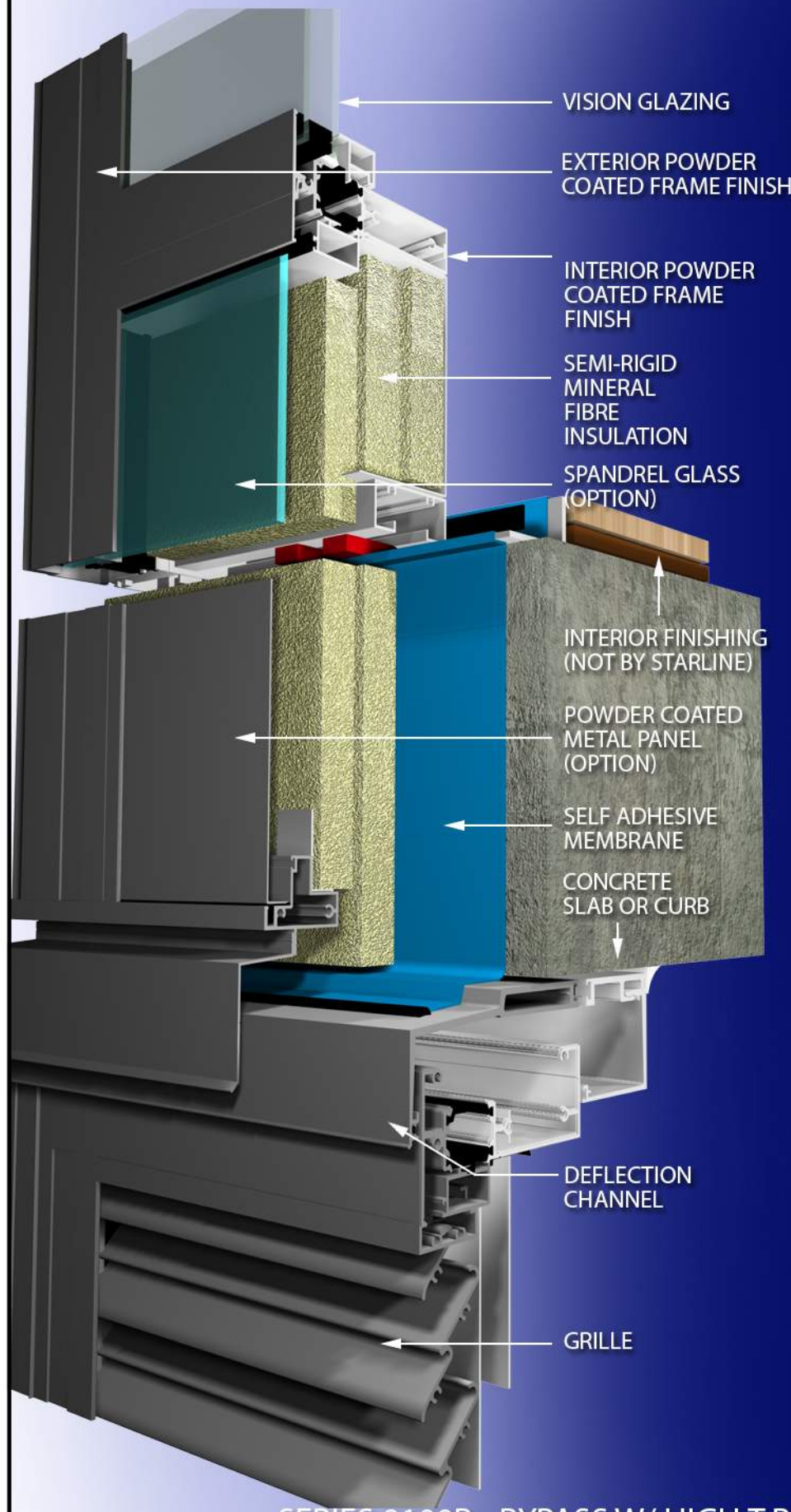


Series 9100R Product Renderings *STARLINE* *WINDOWS*

Flush Glazed Aluminum Window Wall
Available in Double Glazed



Quality, Comfort & Peace of Mind

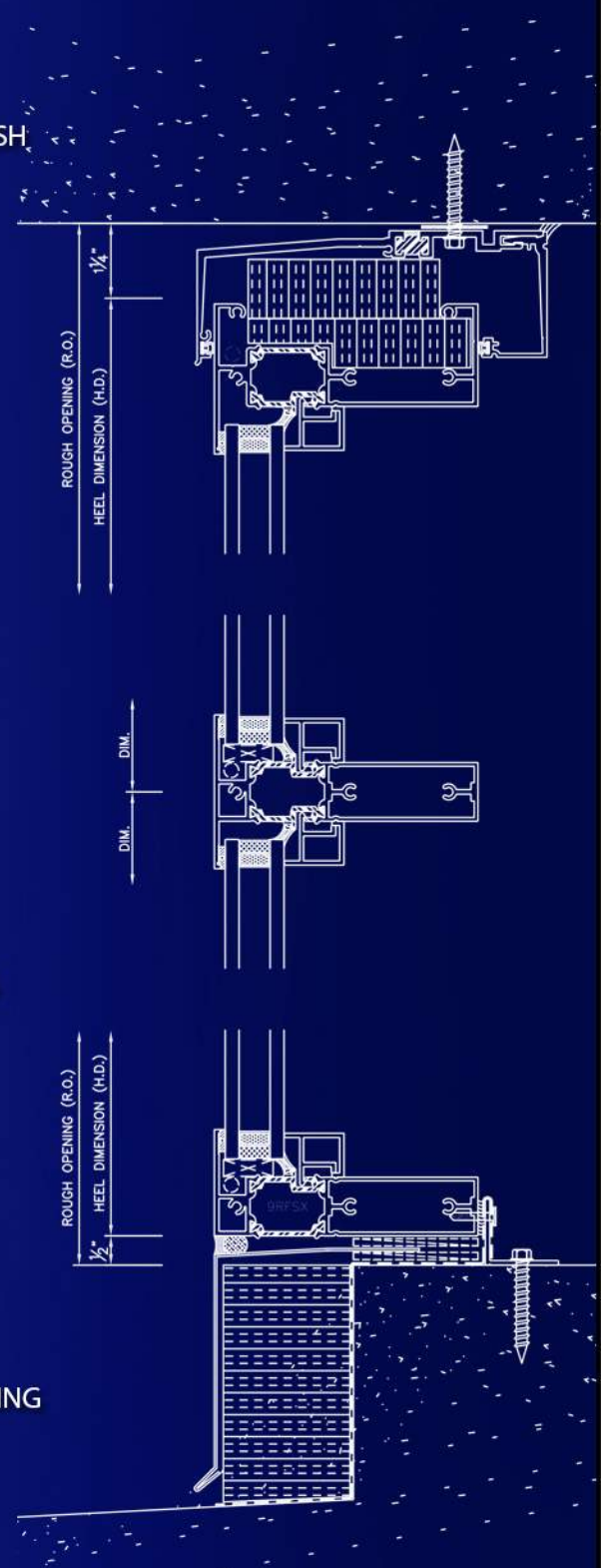
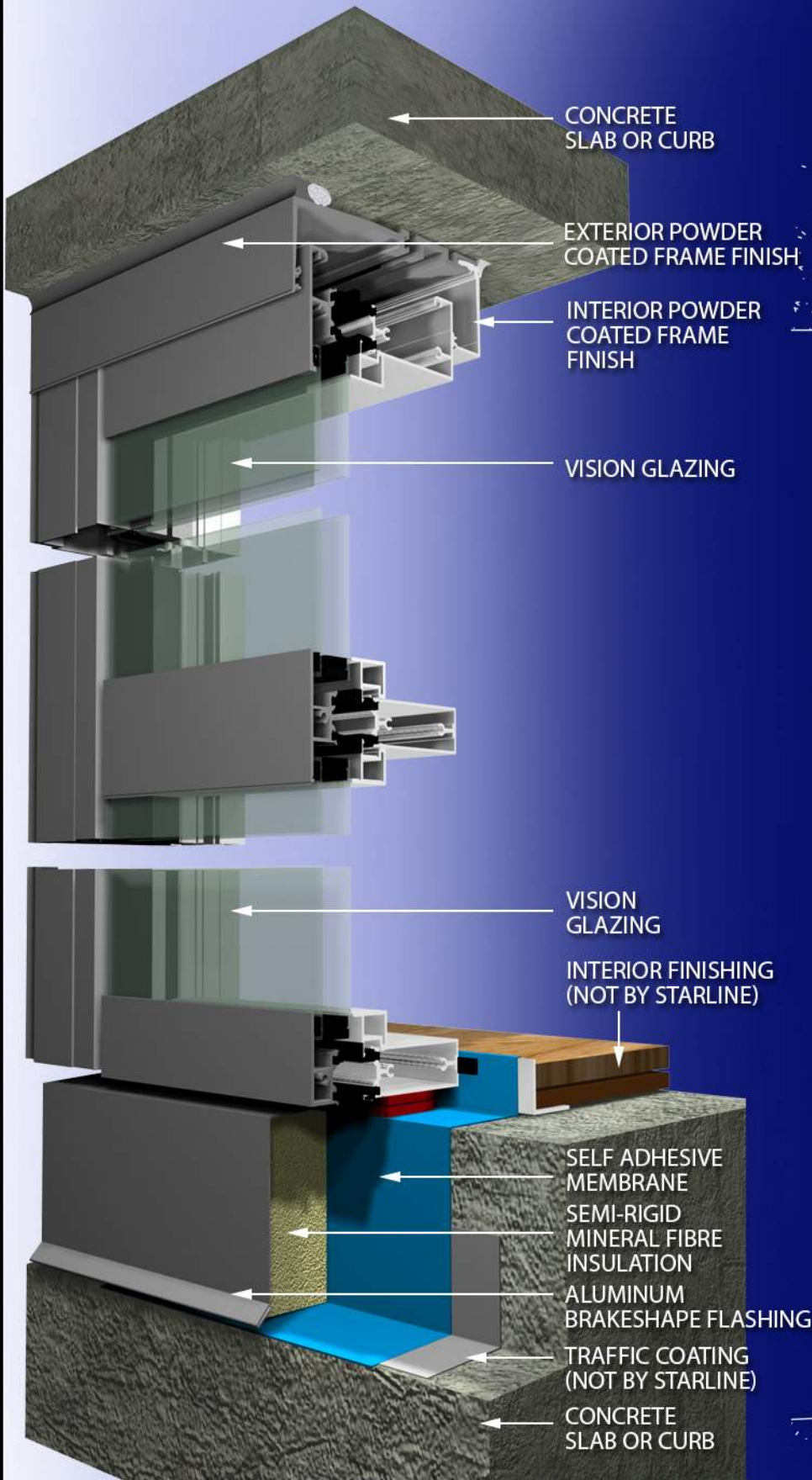


SERIES 9100R - BYPASS W/ HIGH T BAR, HEAD DEFLECTOR & GRILLE

THIS DETAIL IS A SUGGESTED METHOD OF INSTALLATION AND DOES NOT REPRESENT A DETAIL THAT IS SUITABLE FOR A SPECIFIC PROJECT. TO CONFIRM PROJECT SPECIFIC DETAILS, PLEASE CHECK WITH YOUR WATERPROOFING/BUILDING ENVELOPE CONSULTANT.

DRAWINGS ARE SUBJECT TO CHANGE WITHOUT NOTICE

AUTHOR:	DATE:	DWG NO:
S.R.R.	NOV. 2017	9100R - DWG 1

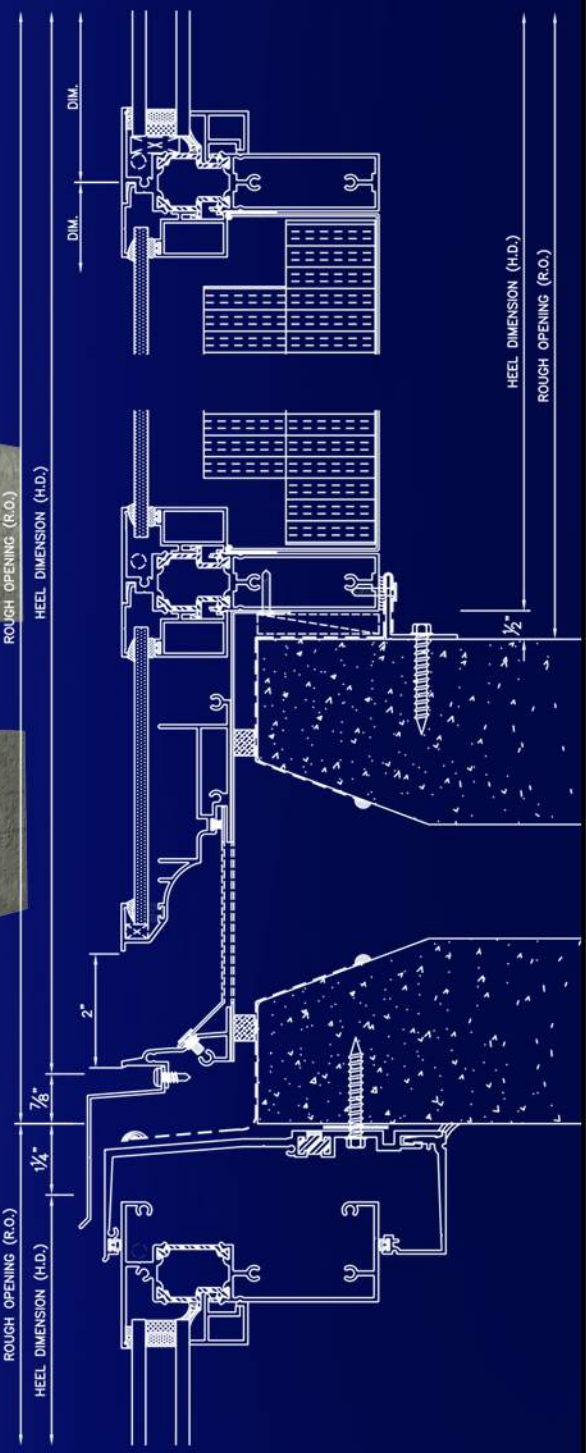
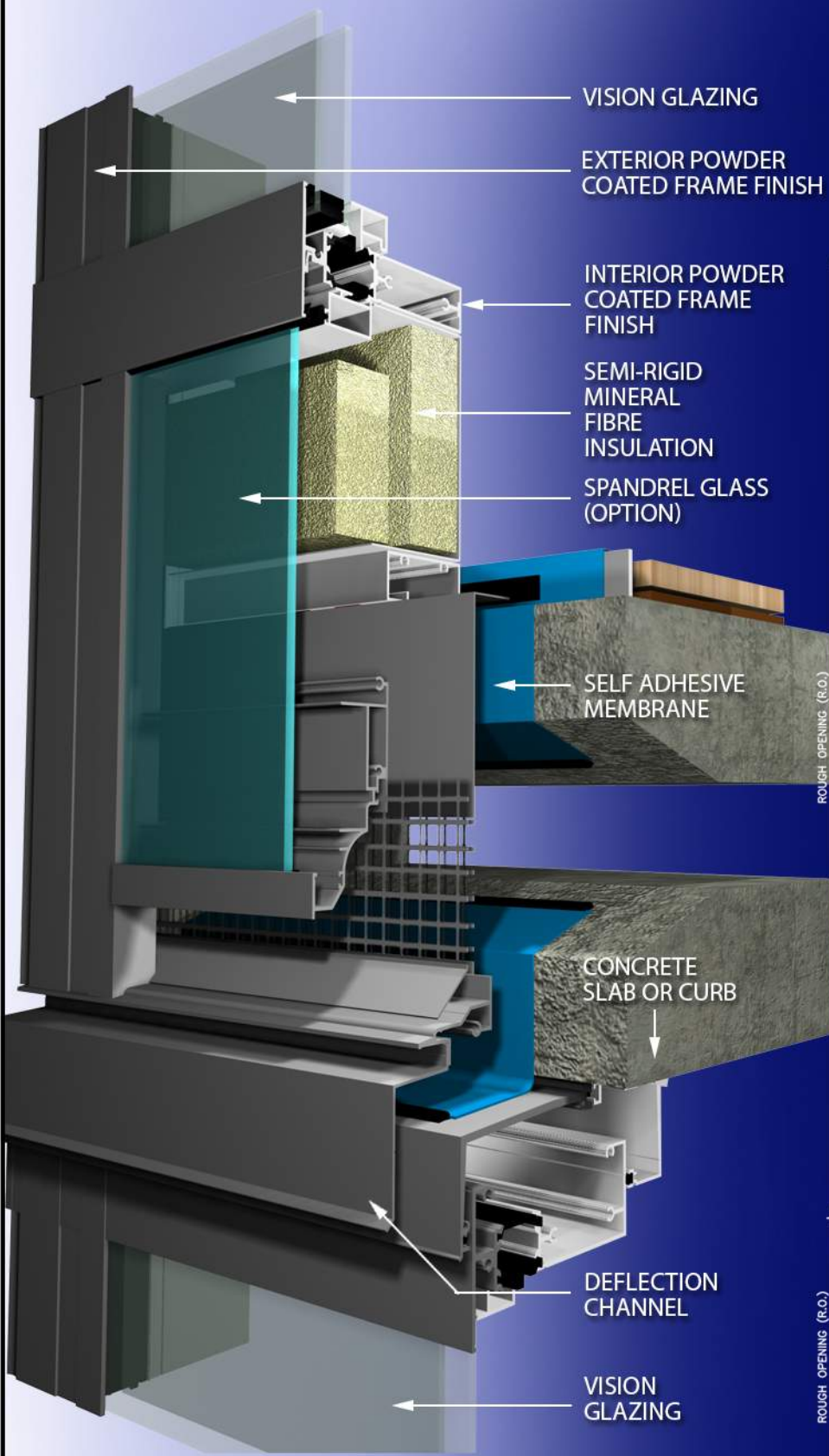


SERIES 9100R - HEAD DEFLECTOR, HORIZONTAL MULLION & SILL

THIS DETAIL IS A SUGGESTED METHOD OF INSTALLATION AND DOES NOT REPRESENT A DETAIL THAT IS SUITABLE FOR A SPECIFIC PROJECT. TO CONFIRM PROJECT SPECIFIC DETAILS, PLEASE CHECK WITH YOUR WATERPROOFING/BUILDING ENVELOPE CONSULTANT.

DRAWINGS ARE SUBJECT TO CHANGE WITHOUT NOTICE

AUTHOR:	DATE:	DWG NO:
S.R.R.	NOV. 2017	9100R - DWG 3

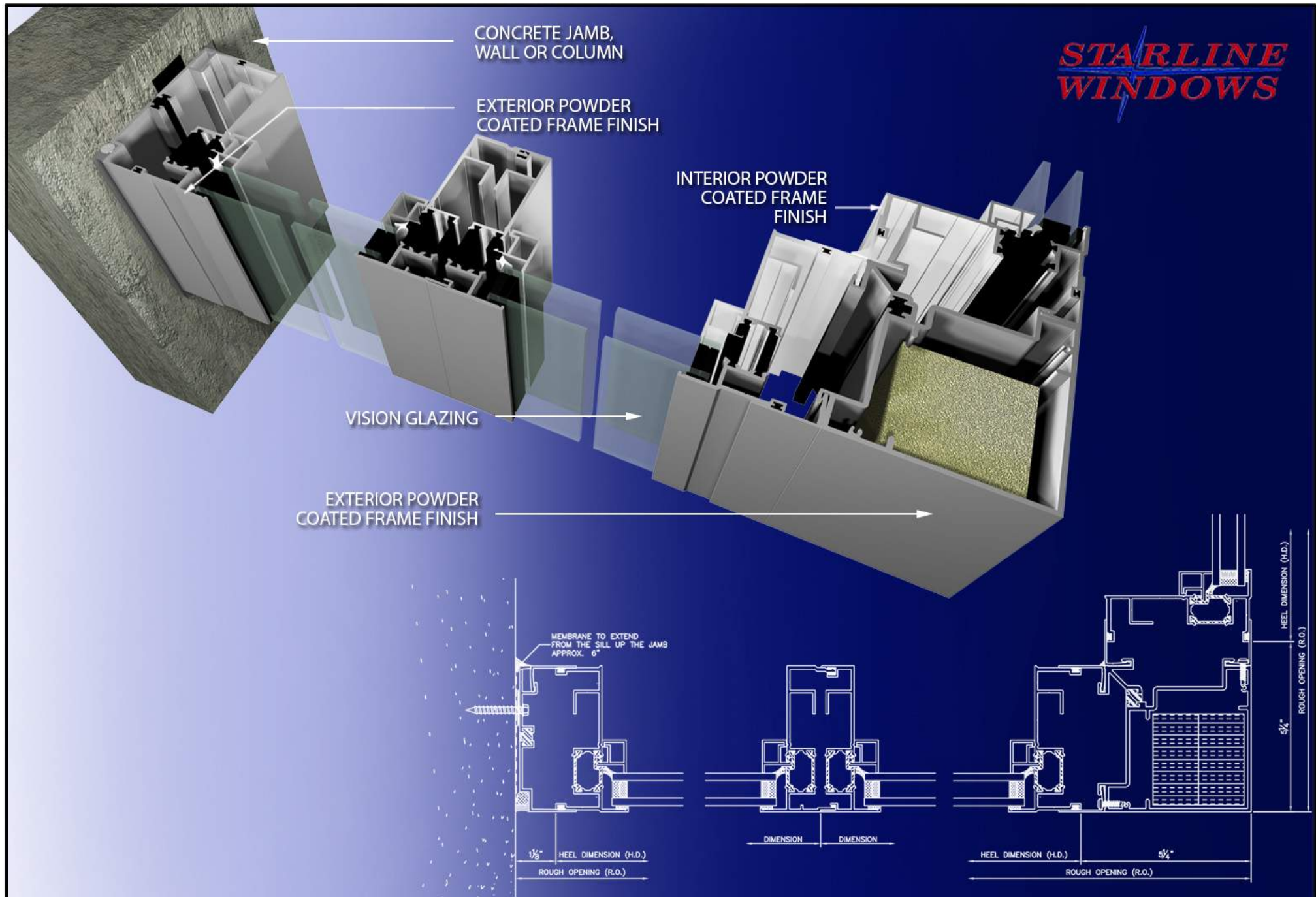


SERIES 9100R - TYPICAL IN SLAB DUCT DETAIL

THIS DETAIL IS A SUGGESTED METHOD OF INSTALLATION AND DOES NOT REPRESENT A DETAIL THAT IS SUITABLE FOR A SPECIFIC PROJECT. TO CONFIRM PROJECT SPECIFIC DETAILS, PLEASE CHECK WITH YOUR WATERPROOFING/BUILDING ENVELOPE CONSULTANT.

DRAWINGS ARE SUBJECT TO CHANGE WITHOUT NOTICE

AUTHOR:	DATE:	DWG NO:
S.R.R.	NOV. 2017	9100R - DWG 4



SERIES 9100R - SEISMIC JAMB, 180 DEGREE COUPLER & 90 DEGREE CORNER COUPLER

THIS DETAIL IS A SUGGESTED METHOD OF INSTALLATION AND DOES NOT REPRESENT A DETAIL THAT IS SUITABLE FOR A SPECIFIC PROJECT. TO CONFIRM PROJECT SPECIFIC DETAILS, PLEASE CHECK WITH YOUR WATERPROOFING/BUILDING ENVELOPE CONSULTANT.

**DRAWINGS ARE SUBJECT TO
CHANGE WITHOUT NOTICE**

AUTHOR:

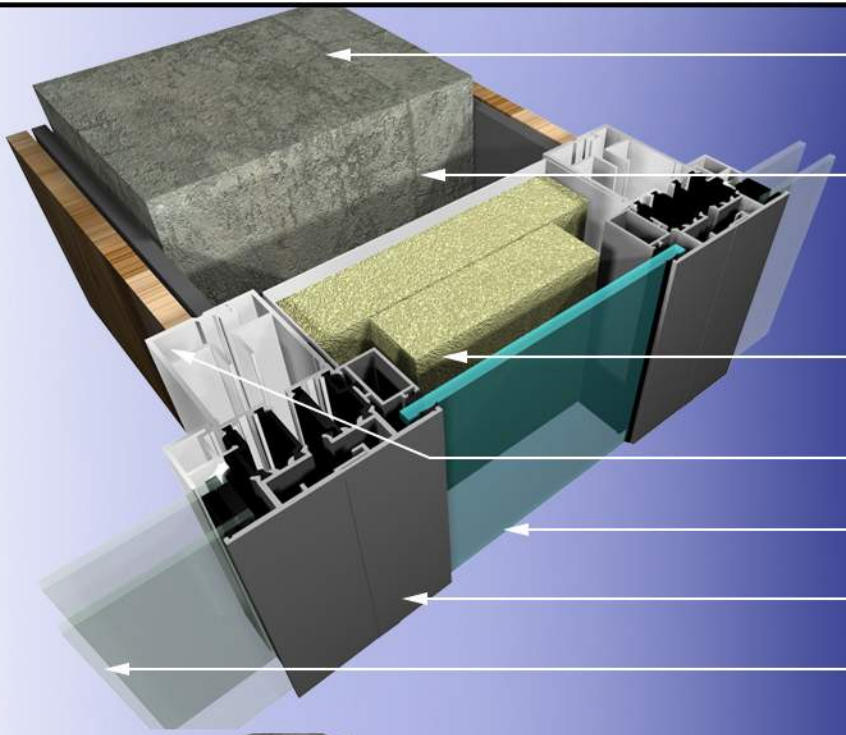
S.R.R.

DATE:

NOV. 2017

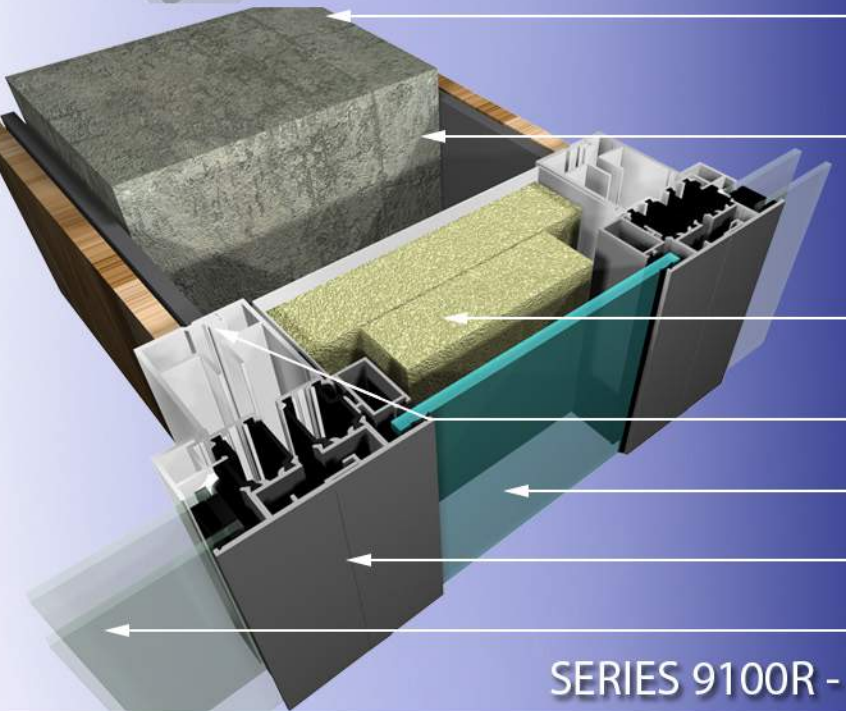
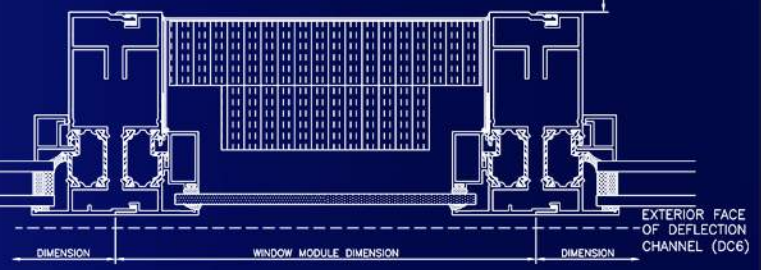
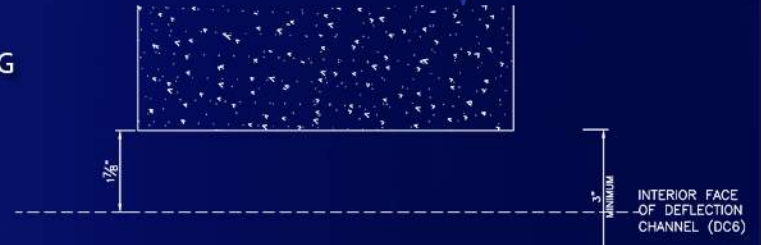
DRAWING NUMBER:

9100R - DWG 5



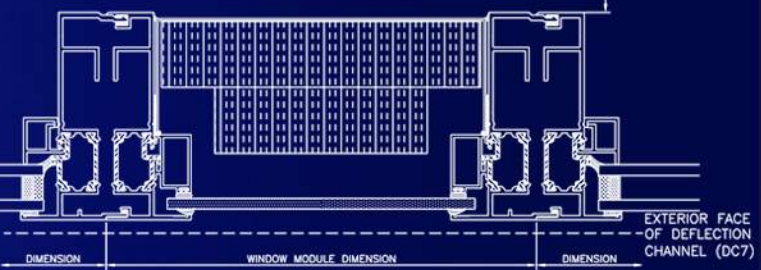
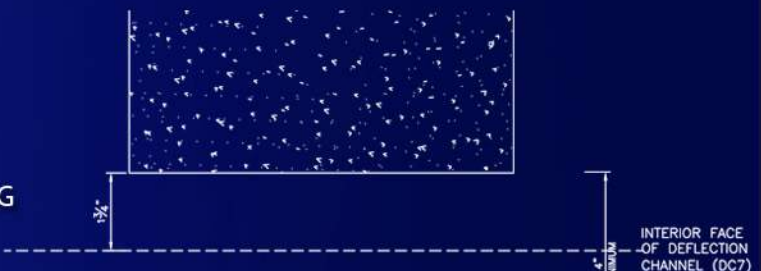
CONCRETE COLUMN
MINIMUM 3" REQUIRED
BETWEEN CONCRETE
STRUCTURE & WINDOW
FRAME. THIS DIMENSION
MAY BE REQUIRED TO BE
GREATER THAN 3" DEPENDING
ON THE SIZE OF THE
CONCRETE STRUCTURE

SEMI-RIGID MINERAL
FIBRE INSULATION
INTERIOR POWDER
COATED FRAME
FINISH
SPANDREL GLASS
(OPTION)
EXTERIOR POWDER
COATED FRAME FINISH
VISION GLAZING



CONCRETE COLUMN
MINIMUM 4" REQUIRED
BETWEEN CONCRETE
STRUCTURE & WINDOW
FRAME. THIS DIMENSION
MAY BE REQUIRED TO BE
GREATER THAN 4" DEPENDING
ON THE SIZE OF THE
CONCRETE STRUCTURE

SEMI-RIGID MINERAL
FIBRE INSULATION
INTERIOR POWDER
COATED FRAME
FINISH
SPADREL GLASS
(OPTION)
EXTERIOR POWDER
COATED FRAME FINISH
VISION GLAZING



SERIES 9100R - DC6 & DC7 OPTIONS IN FRONT OF CONCRETE COLUMN

THIS DETAIL IS A SUGGESTED METHOD OF INSTALLATION AND DOES NOT REPRESENT A DETAIL THAT IS SUITABLE FOR A SPECIFIC PROJECT. TO CONFIRM PROJECT SPECIFIC DETAILS, PLEASE CHECK WITH YOUR WATERPROOFING/BUILDING ENVELOPE CONSULTANT.

DRAWINGS ARE SUBJECT TO CHANGE WITHOUT NOTICE

AUTHOR:	DATE:	DRAWING NUMBER:
S.R.R.	NOV. 2017	9100R - DWG 6