

# Series 9200 Product Renderings

**STARLINE**  
**WINDOWS**

Thermally Enhanced Aluminum Window Wall  
Available in Double & Triple Glazed

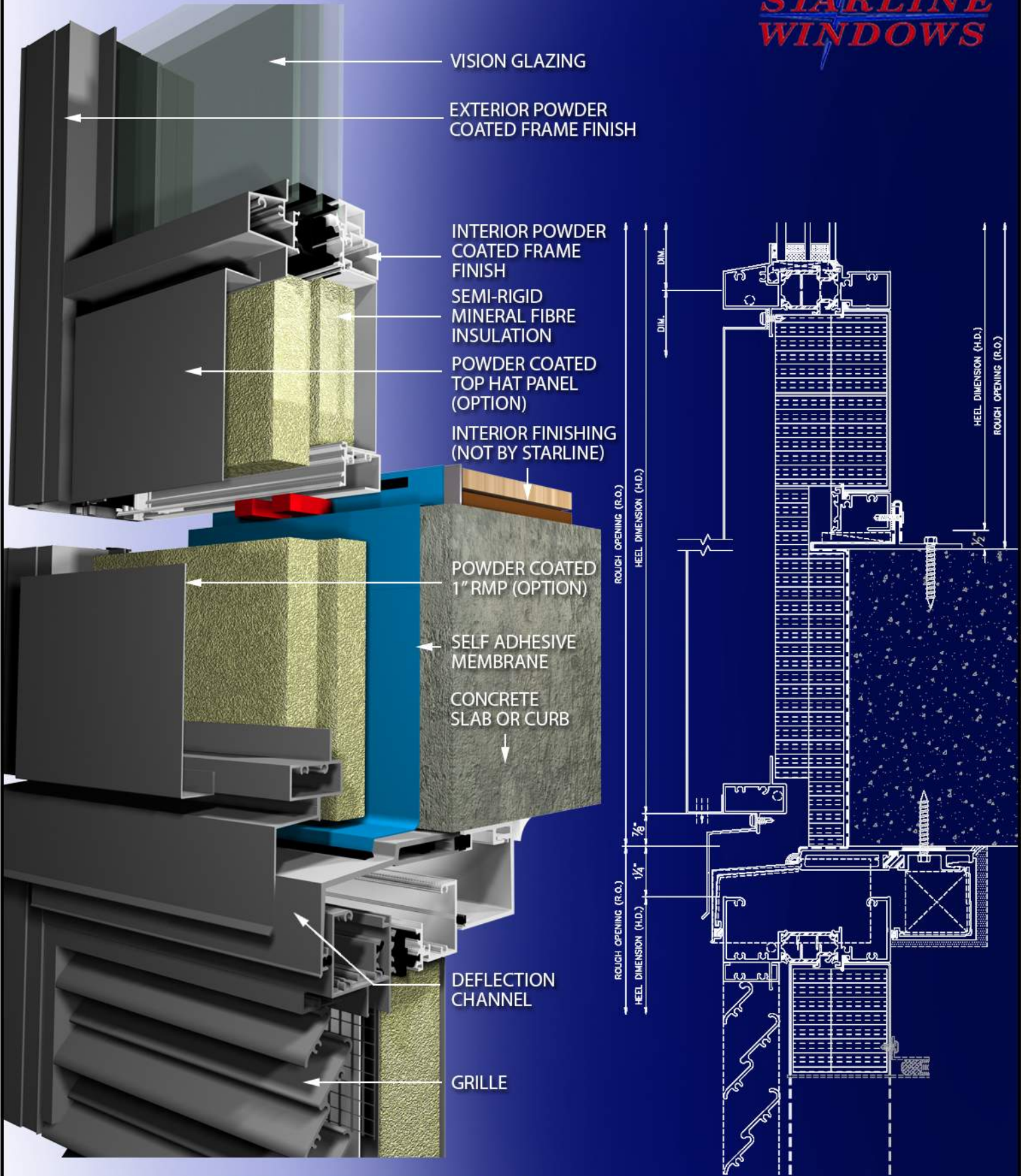


Quality, Comfort & Peace of Mind









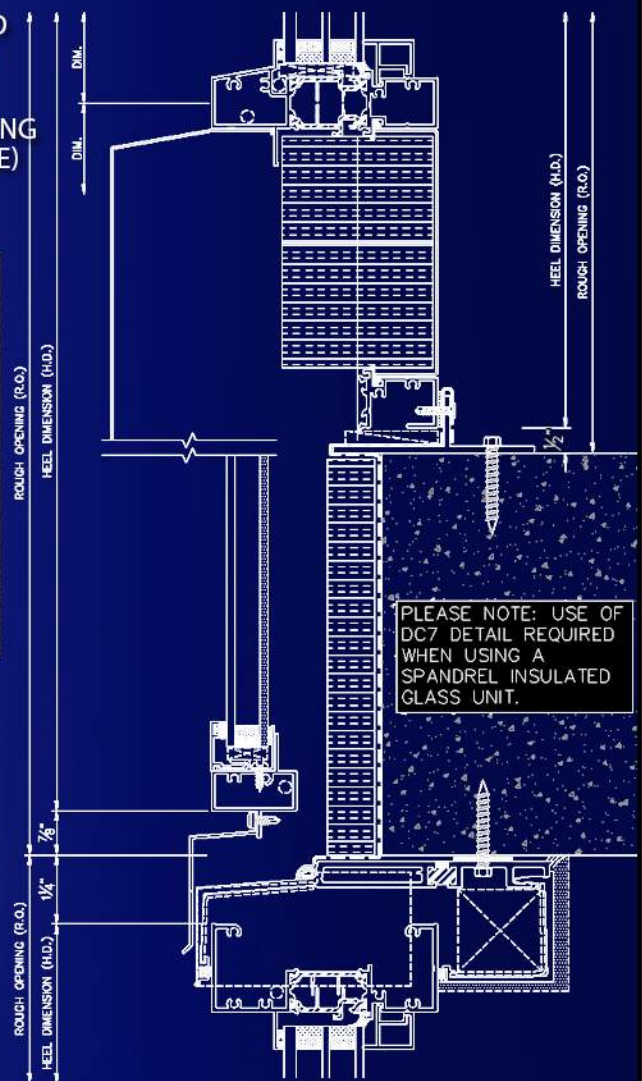
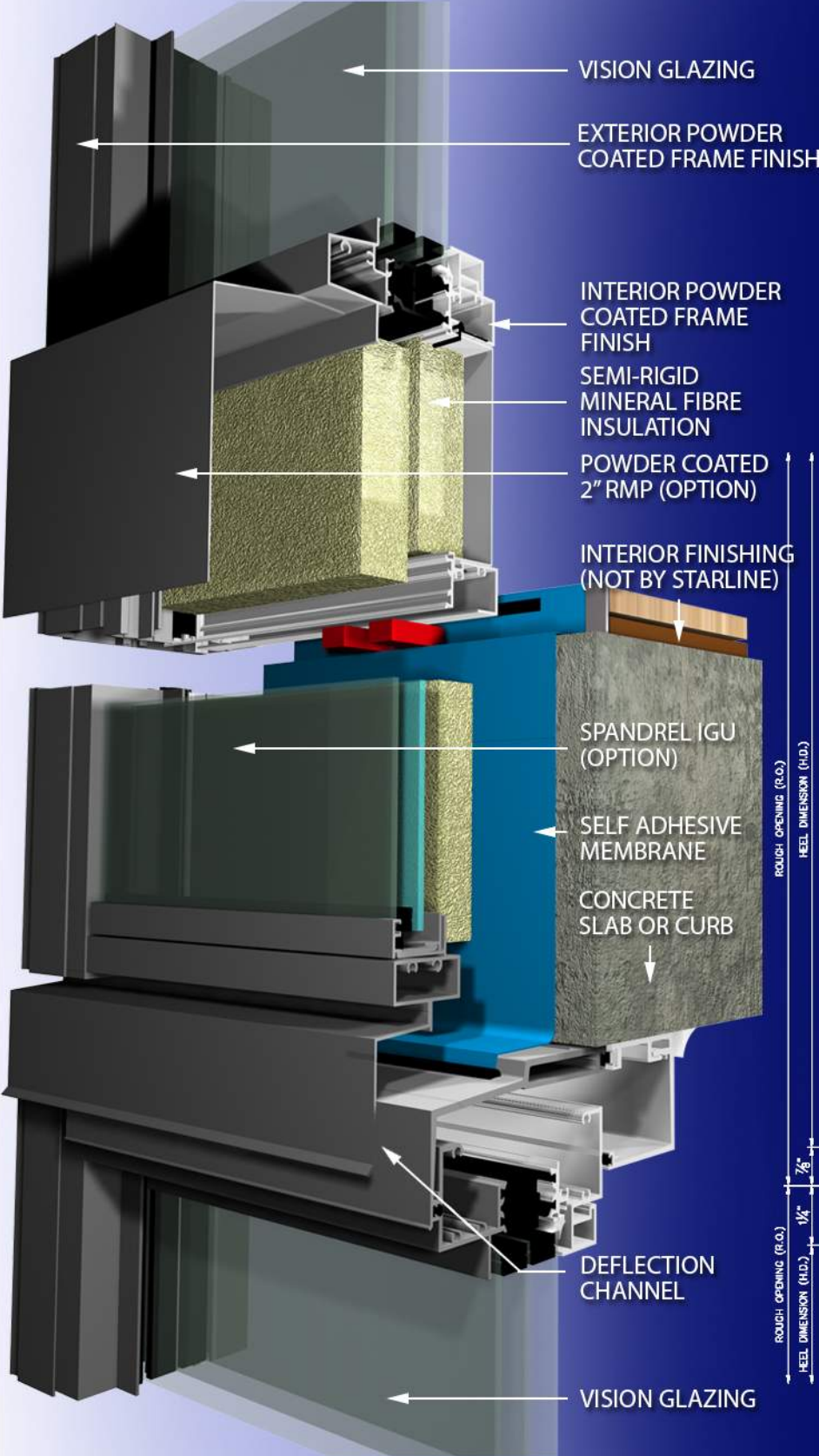
**SERIES 9200 - BYPASS W/ HIGH TBAR, 7" HEAD DEFLECTOR & GRILLE W/ 1" CONTINUOUS INSULATION AT SLAB EDGE**

THIS DETAIL IS A SUGGESTED METHOD OF INSTALLATION AND DOES NOT REPRESENT A DETAIL THAT IS SUITABLE FOR A SPECIFIC PROJECT. TO CONFIRM PROJECT SPECIFIC DETAILS, PLEASE CHECK WITH YOUR WATERPROOFING/BUILDING ENVELOPE CONSULTANT.

**DRAWINGS ARE SUBJECT TO CHANGE WITHOUT NOTICE**

<b>AUTHOR:</b>	<b>DATE:</b>	<b>DWG NO:</b>
S.R.R.	FEB. 2023	9200 - DWG 2





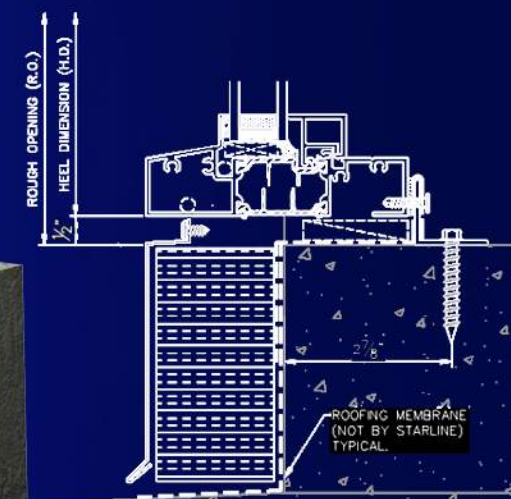
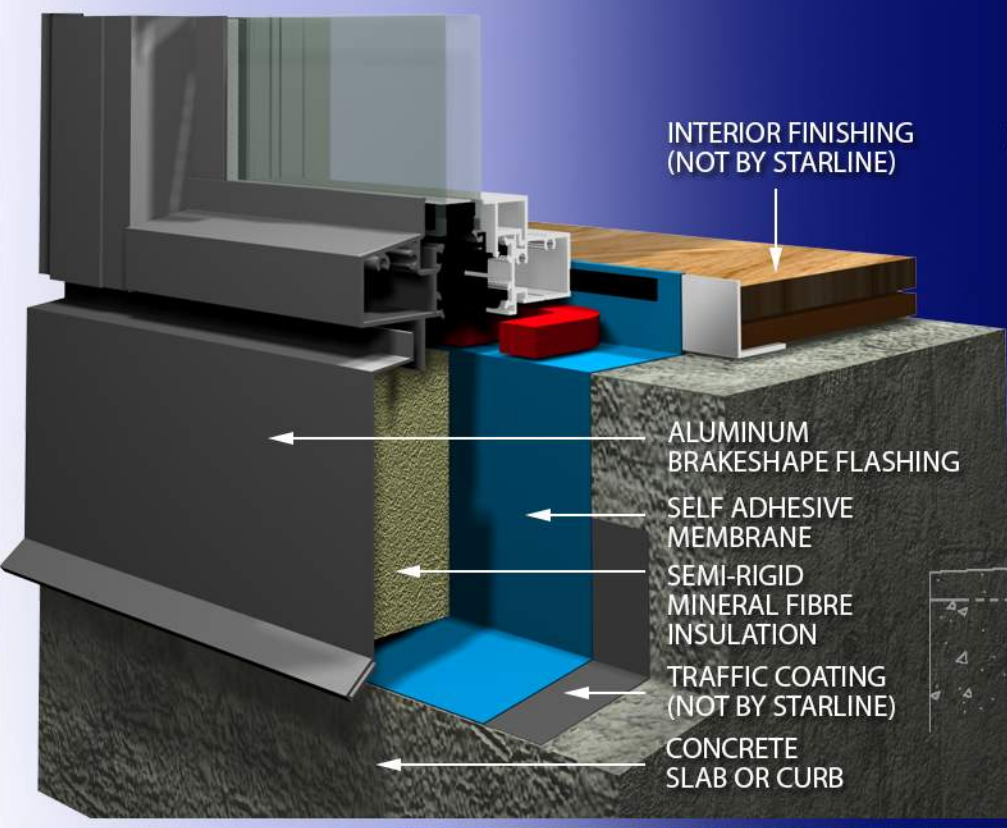
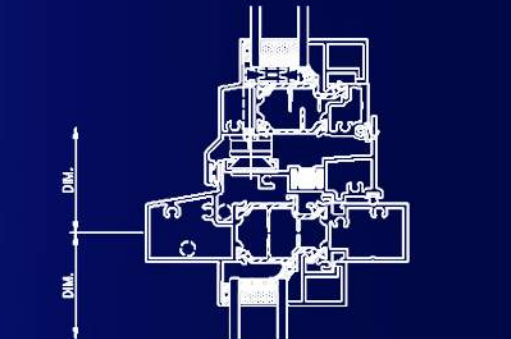
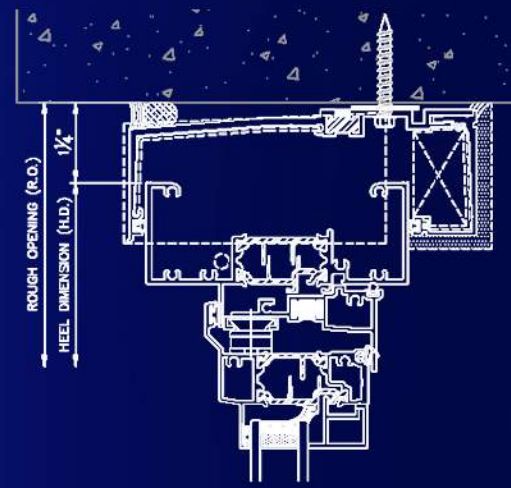
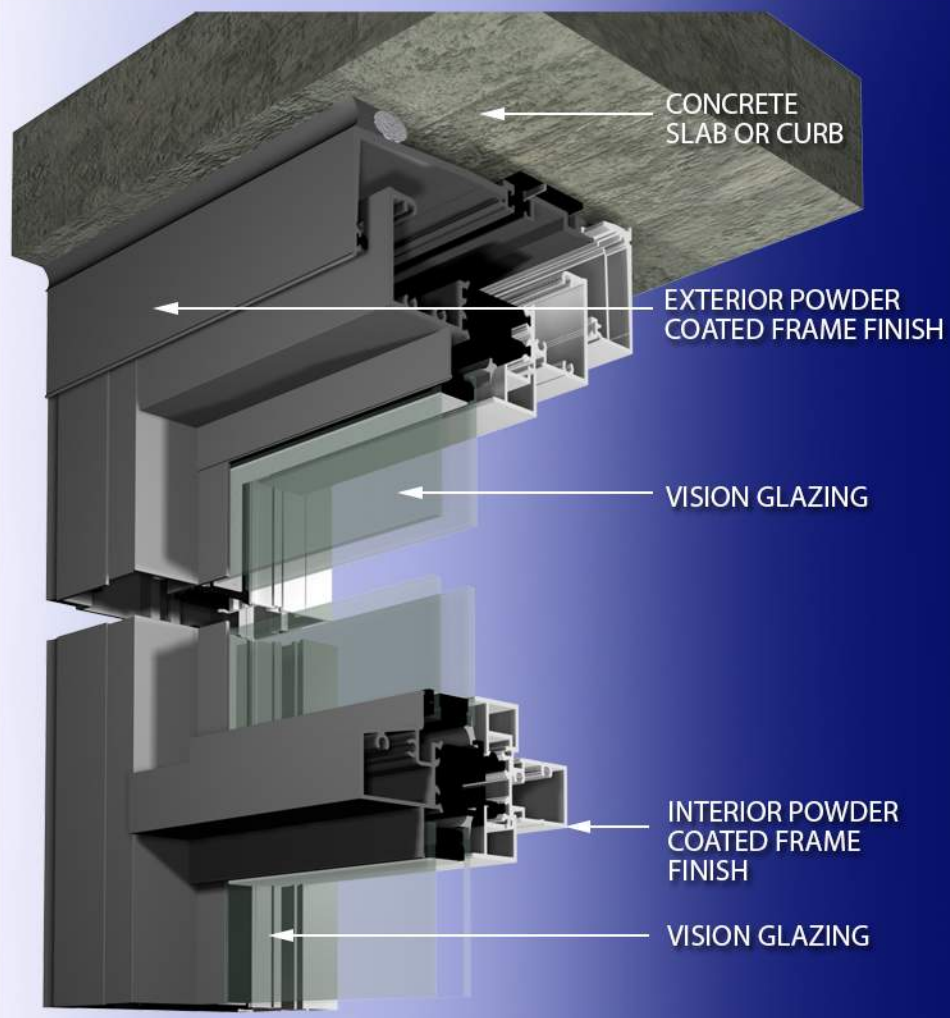
**SERIES 9200 - BYPASS W/ HIGH TBAR & 7" HEAD DEFLECTOR**

THIS DETAIL IS A SUGGESTED METHOD OF INSTALLATION AND DOES NOT REPRESENT A DETAIL THAT IS SUITABLE FOR A SPECIFIC PROJECT. TO CONFIRM PROJECT SPECIFIC DETAILS, PLEASE CHECK WITH YOUR WATERPROOFING/BUILDING ENVELOPE CONSULTANT.

**DRAWINGS ARE SUBJECT TO CHANGE WITHOUT NOTICE**

<b>AUTHOR:</b>	<b>DATE:</b>	<b>DWG NO:</b>
S.R.R.	FEB. 2023	9200 - DWG 3



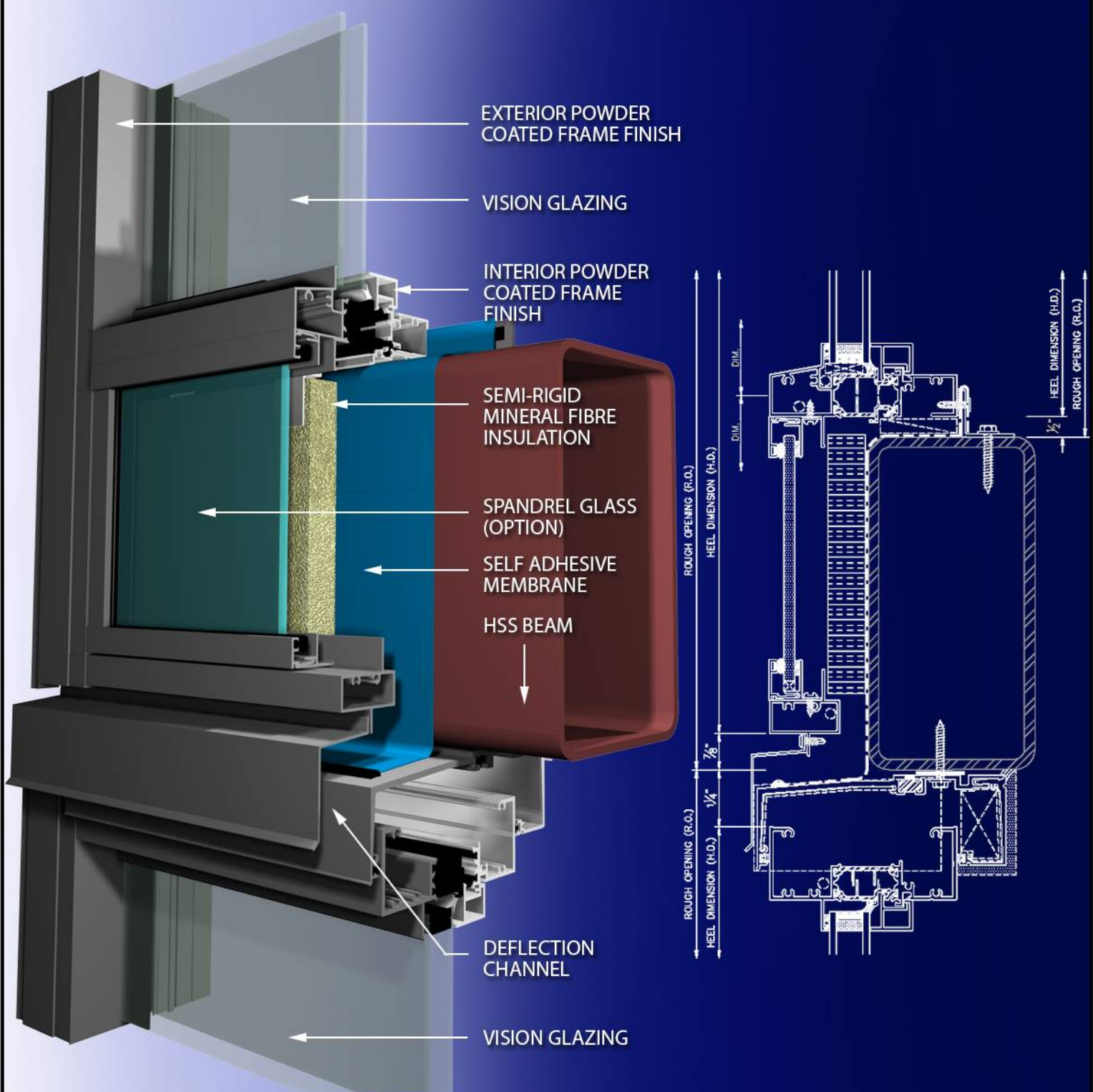


## SERIES 9200 - HEAD DEFLECTOR, HORIZONTAL MULLION & SILL

THIS DETAIL IS A SUGGESTED METHOD OF INSTALLATION AND DOES NOT REPRESENT A DETAIL THAT IS SUITABLE FOR A SPECIFIC PROJECT. TO CONFIRM PROJECT SPECIFIC DETAILS, PLEASE CHECK WITH YOUR WATERPROOFING/BUILDING ENVELOPE CONSULTANT.

**DRAWINGS ARE SUBJECT TO CHANGE WITHOUT NOTICE**

AUTHOR:	DATE:	DWG NO:
S.R.R.	FEB. 2023	9200 - DWG 4



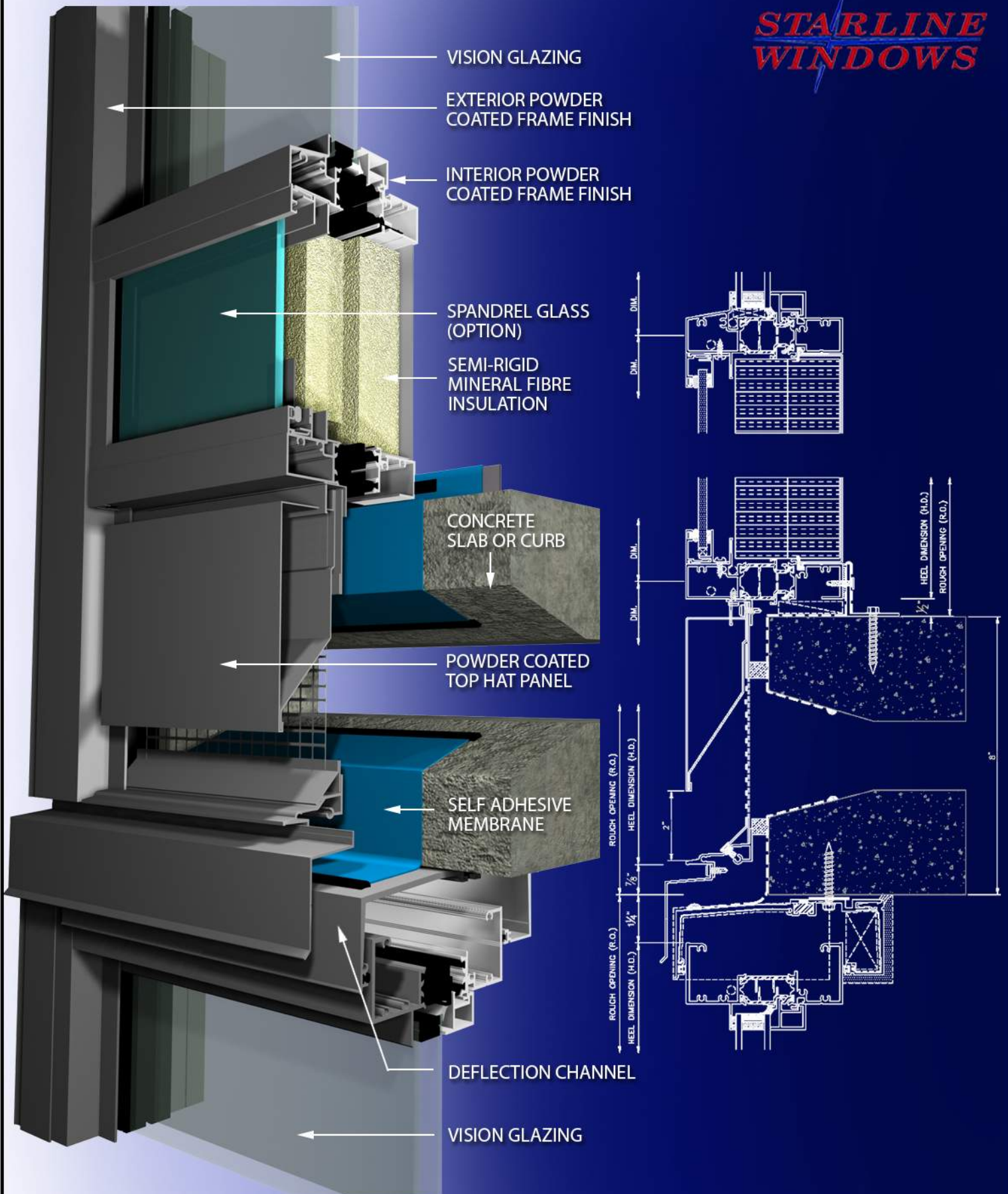
## SERIES 9200 - BYPASS W/ HSS CONDITION

THIS DETAIL IS A SUGGESTED METHOD OF INSTALLATION AND DOES NOT REPRESENT A DETAIL THAT IS SUITABLE FOR A SPECIFIC PROJECT. TO CONFIRM PROJECT SPECIFIC DETAILS, PLEASE CHECK WITH YOUR WATERPROOFING/BUILDING ENVELOPE CONSULTANT.

**DRAWINGS ARE SUBJECT TO CHANGE WITHOUT NOTICE**

AUTHOR:	DATE:	DWG NO:
S.R.R.	FEB. 2023	9200 - DWG 5





**SERIES 9200 - TYPICAL IN SLAB DUCT DETAIL**

THIS DETAIL IS A SUGGESTED METHOD OF INSTALLATION AND DOES NOT REPRESENT A DETAIL THAT IS SUITABLE FOR A SPECIFIC PROJECT. TO CONFIRM PROJECT SPECIFIC DETAILS, PLEASE CHECK WITH YOUR WATERPROOFING/BUILDING ENVELOPE CONSULTANT.

**DRAWINGS ARE SUBJECT TO CHANGE WITHOUT NOTICE**

**AUTHOR:**

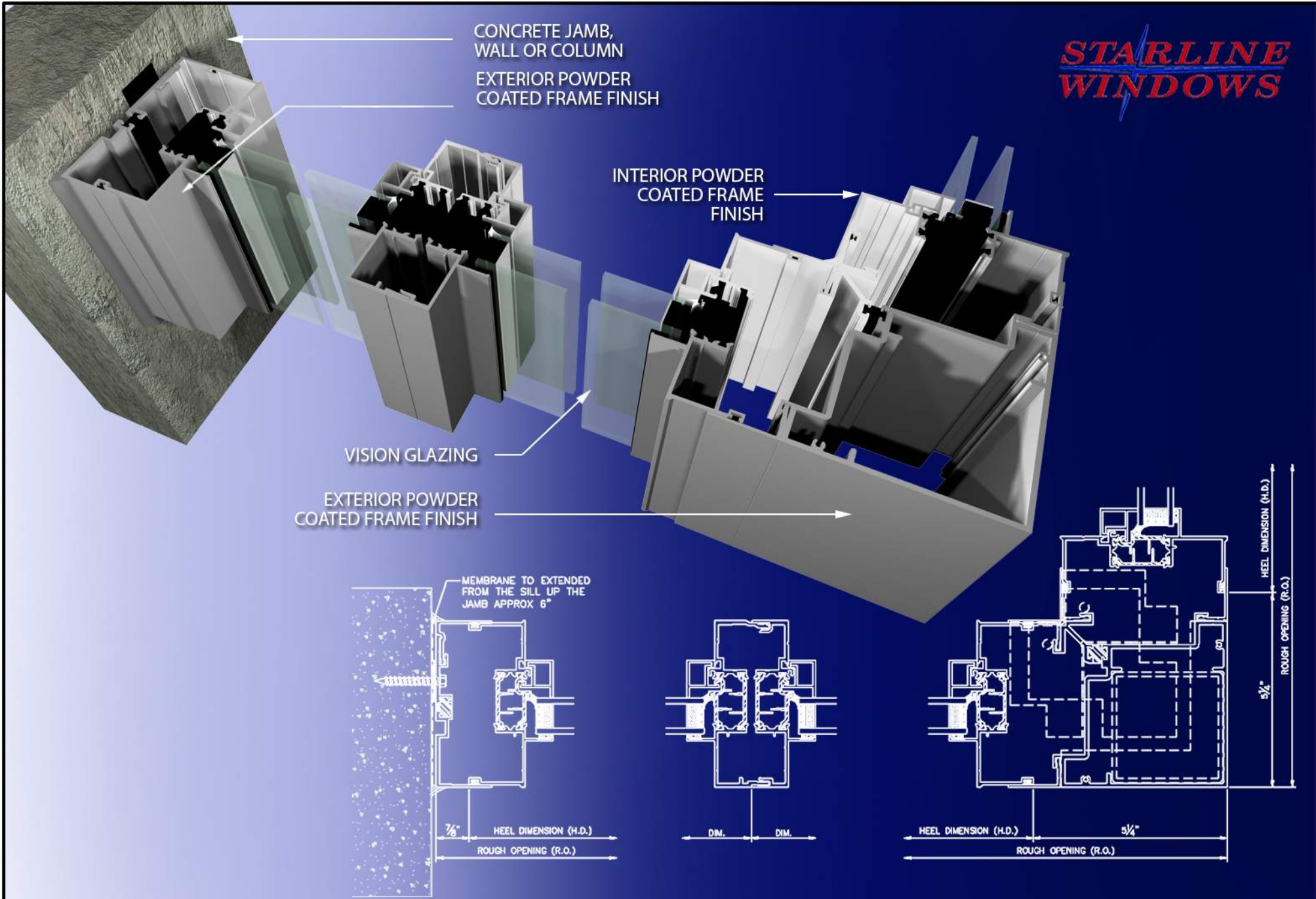
S.R.R.

**DATE:**

FEB. 2023

**DWG NO:**

9200 - DWG 6



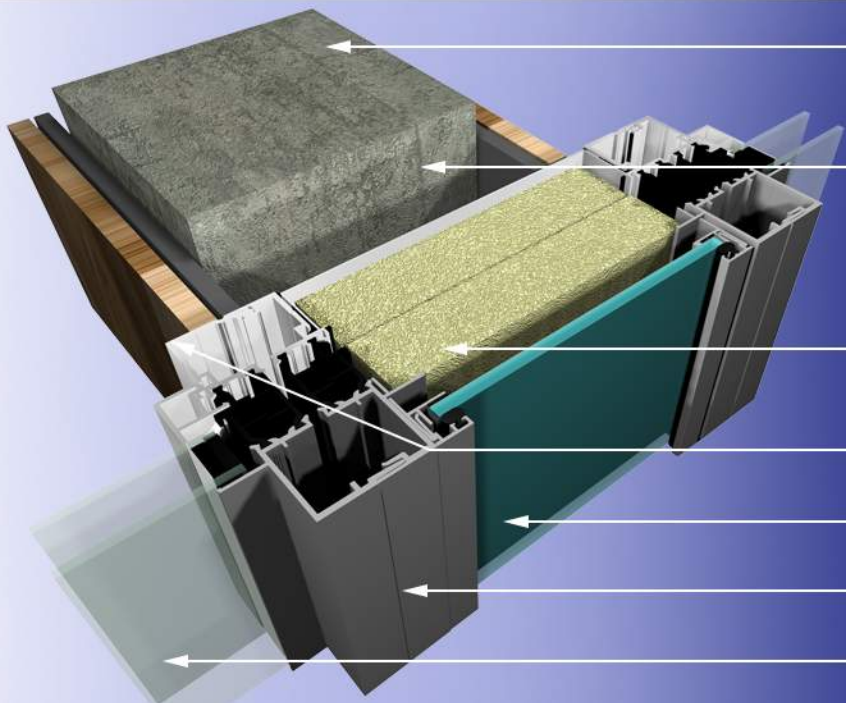
## SERIES 9200 - SEISMIC JAMB, 180 DEGREE COUPLER & 90 DEGREE CORNER COUPLER

THIS DETAIL IS A SUGGESTED METHOD OF INSTALLATION AND DOES NOT REPRESENT A DETAIL THAT IS SUITABLE FOR A SPECIFIC PROJECT. TO CONFIRM PROJECT SPECIFIC DETAILS, PLEASE CHECK WITH YOUR WATERPROOFING/BUILDING ENVELOPE CONSULTANT.

DRAWINGS ARE SUBJECT TO CHANGE WITHOUT NOTICE

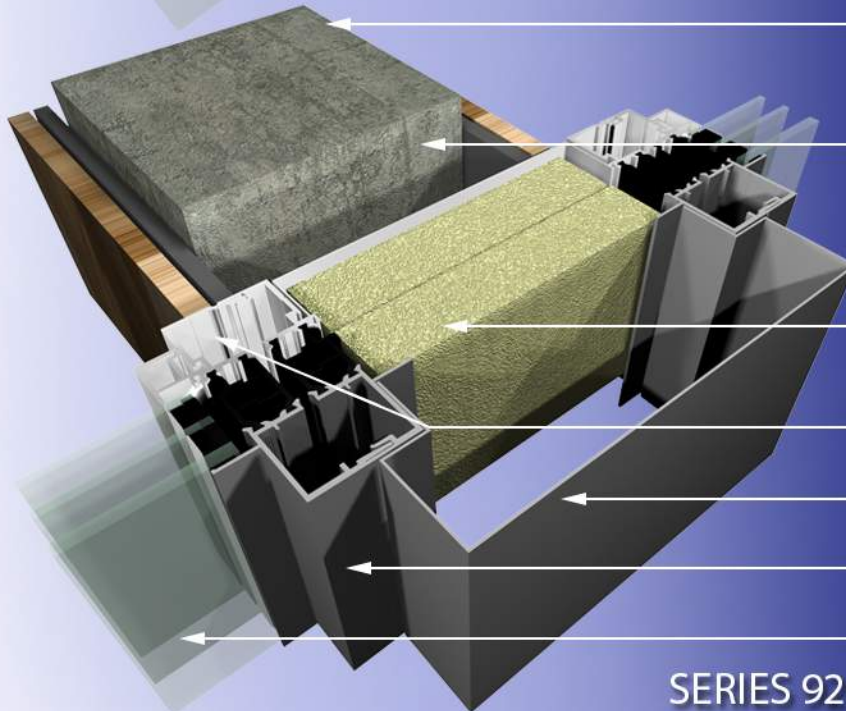
AUTHOR:	DATE:	DRAWING NUMBER:
S.R.R.	FEB. 2023	9200 - DWG 7





CONCRETE COLUMN  
MINIMUM 3" REQUIRED BETWEEN CONCRETE STRUCTURE & WINDOW FRAME. THIS DIMENSION MAY BE REQUIRED TO BE GREATER THAN 3" DEPENDING ON THE SIZE OF THE CONCRETE STRUCTURE

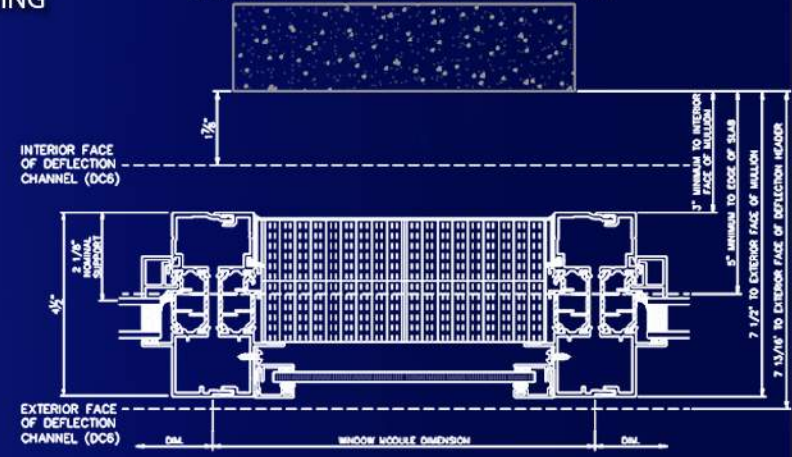
SEMI-RIGID MINERAL FIBRE INSULATION  
INTERIOR POWDER COATED FRAME FINISH  
SPANDREL GLASS (OPTION)  
EXTERIOR POWDER COATED FRAME FINISH  
VISION GLAZING



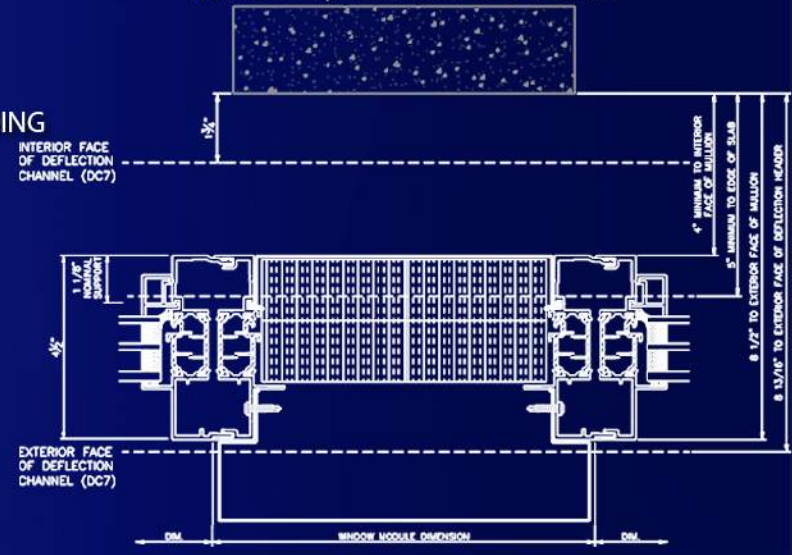
CONCRETE COLUMN  
MINIMUM 4" REQUIRED BETWEEN CONCRETE STRUCTURE & WINDOW FRAME. THIS DIMENSION MAY BE REQUIRED TO BE GREATER THAN 4" DEPENDING ON THE SIZE OF THE CONCRETE STRUCTURE

SEMI-RIGID MINERAL FIBRE INSULATION  
INTERIOR POWDER COATED FRAME FINISH  
POWDER COATED METAL PANEL (OPTION)  
EXTERIOR POWDER COATED FRAME FINISH  
VISION GLAZING

MINIMUM DIMENSIONS REQUIRED WHEN USING 2 1/8" NOMINAL SUPPORT



MINIMUM DIMENSIONS REQUIRED WHEN USING 1 1/8" NOMINAL SUPPORT



## SERIES 9200 - DC6 & DC7 OPTIONS IN FRONT OF CONCRETE COLUMN

THIS DETAIL IS A SUGGESTED METHOD OF INSTALLATION AND DOES NOT REPRESENT A DETAIL THAT IS SUITABLE FOR A SPECIFIC PROJECT. TO CONFIRM PROJECT SPECIFIC DETAILS, PLEASE CHECK WITH YOUR WATERPROOFING/BUILDING ENVELOPE CONSULTANT.

DRAWINGS ARE SUBJECT TO CHANGE WITHOUT NOTICE

AUTHOR:	DATE:	DRAWING NUMBER:
S.R.R.	FEB. 2023	9200 - DWG 8