

3000 Series Adjustment Instructions



Tilt & Turn Window Adjustments for the Starline 3000 Series

Roller Keepers

- Location
 - Found on the bottom, side and top of your vent
- Purpose
 - To increase or decrease compression of the vent
- Adjustment
 - Rotate the keeper left to decrease compression
 - Rotate the keeper right to increase the compression
- Tool Required
 - T15 Torx key
- Image
 -



3000 Series Adjustment Instructions



Corner Pivot

- Location
 - Found on the bottom corner of the vent/mainframe opposite of the handle
- Purpose
 - To adjust the window left or right (top adjustment in the picture, position on the vent)
 - To adjust the window up and down (bottom adjustment in the picture positioned on the corner hinge)
- Adjustment
 - Rotate the top adjustment to move the vent left or right (direction will be dependent on which corner the hardware is on)
 - Rotate the bottom adjustment right to lift the vent and left to lower it
- Tool Required
 - #4 allen key
- Image
 -

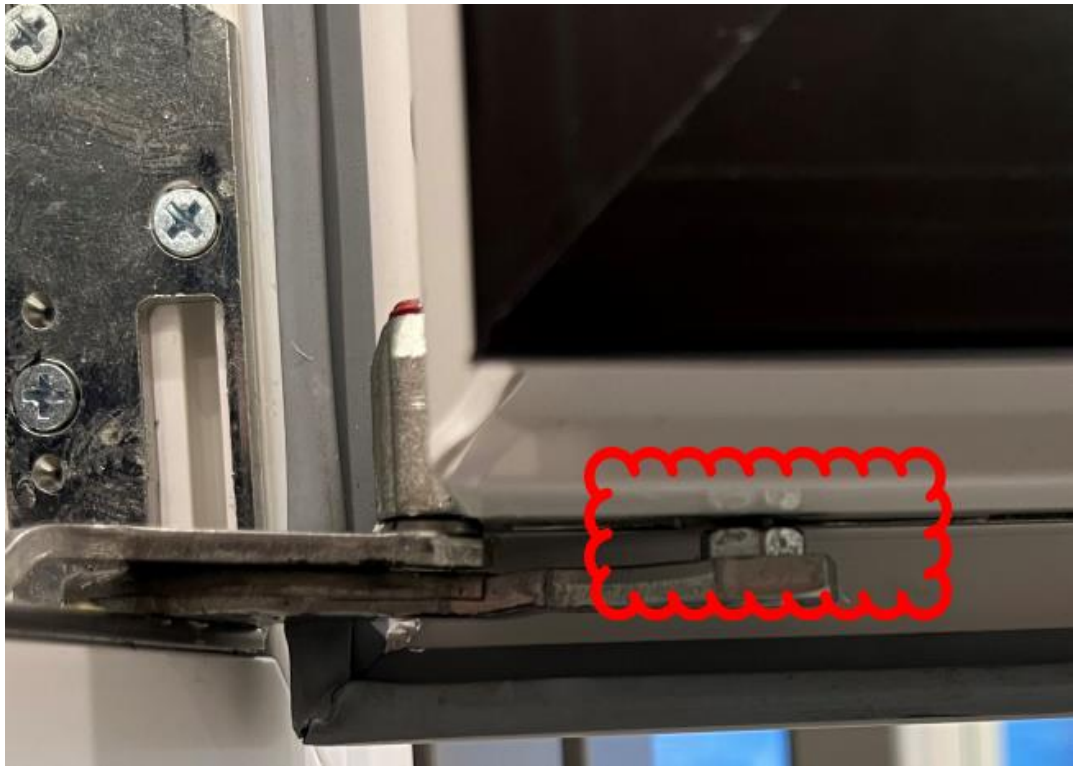


3000 Series Adjustment Instructions



Extension of Corner Pivot

- Location
 - Found at the bottom of the vent extending from the corner drive
- Purpose
 - To increase or decrease compression of the bottom of the vent
- Adjustment
 - Rotate the nut left to decrease compression
 - Rotate the nut right to increase the compression
- Tool Required
 - #10 wrench
- Image
 -



3000 Series Adjustment Instructions



Top Concealed Hinge

- Location
 - Found at the top of the vent
- Purpose
 - To adjust the window left or right

Note: This should only be used in tandem with the adjustment on the corner pivot so that the window doesn't become misaligned
- Adjustment
 - Rotate the bit to move the vent left or right (direction will be dependent on which corner the hardware is on)
- Tool Required
 - #4 allen key
- Image
 -

