



Starline Supplied Materials

Before proceeding with your installation please ensure you've been supplied with the following.

- 1) Strap anchors for both jambs and head of the door
- 2) Interior installation angle for the sill

Note: If you're missing any of the above please call your salesmen

Installation Notes and Steps

Installation Notes

- The information provided does not override shop drawings, local laws, and or building codes.
- Eurostar swing doors are designed to allow a 3/8" clearance on all 4 sides of the door, with shims installed at the sill only.
- Do not use expanding foam around the perimeter of doors.
- Doorframes must be installed plumb, level and square, otherwise the product may not perform to specifications, sashes may not operate properly, and the products may fail prematurely. Correct installation includes use of the strap anchors and installation angle provided if shop drawings are provided see further instructions.
- Refer to the installation details for the recommended screw size, length, and type to be used.

Installation Procedure

- Ensure the rough opening is plumb level and square.
- Measure the RO to ensure that the door is the correct size.

Option #1 – Strap Anchors

- 1) Install and fasten the Starline-provided installation angle to the sill of the rough opening. Make sure the placement of the angle aligns with where you want the exterior face of the door to sit within the wall. Confirm that the prep/membrane is brought up and over the installation angle, as shown in the installation details.
- 2) **Optional:** Remove the sash (door leaf) from doorframe for easier handling. Warning: The sash is heavy, and it's recommended to have a crew of a least two people to install the product.
- 3) Shim the frame as per the drawing on page 3 (**Figure 2**), do not shim at the head.
- 4) Install your Starline provided strap anchors on the mainframe of the door as per the strap anchor diagram on page 3 (**Figure 2**).
- 5) Apply caulking to the back of the strap anchors and secure the sill through the installation angle, refer to 3500 Series – "Eurostar Outswing/Inswing Fastening Guide".
- 6) Once the sill is secured, temporarily fasten the jambs/head of the door using the strap anchors

- 7) Secure the jambs, (Refer to “Eurostar Outswing /Inswing Door Fastening Guide”) Secure at all the predrilled holes above and below the hinge locations. Install a shim for each screw between the door frame and the opening frame (if required). Use 3/8” screw caps to cover holes (supplied) and fasten off the remaining strap anchors.
- 8) Install the sash if removed and adjust for proper operation.
- 9) Rod and caulk the interior/exterior of the door to ensure a proper air seal (jambs & head only)
- 10) Remove protective film from all profiles immediately after installation.

Option #2 – Installation Angle

- 1) Install/Fasten your Starline provided installation angle to all 4 sides of the rough opening. Ensure that the placement of the angle corresponds to where you’d like the exterior of the door to sit in the wall and that the prep/membrane goes up and over the installation angle as per the installation details.
- 2) Shim the frame as per the drawing on page 4 (**Figure 2**), do not shim at the head or jambs
- 3) Install the door into the rough opening and temporarily fasten a few screws into the frame refer to 3500 Series – “Eurostar Swing Door Fastening Guide”.
- 4) Ensure the door frame is plumb and level after temporary fastening and proceed with the remaining screws in every slot.
- 5) Rod and caulk the exterior of the door to ensure a proper air seal
- 6) Remove protective film from all profiles immediately after installation.

PVC Shims

Purpose

- Used at the sill of the door to support the weight of glass in the frame and to ensure proper operation is achieved.

Material

- Starline uses and recommends high impact PVC shims. Please select shims that will fit the gap without being loose or deforming the frame, do not force shims into place, and attach shims with caulking or glue.

Location of Shims

- Place shims as shown in the diagrams on this page. It is not always possible to place shims exactly where shown, therefore location dimensions can vary +/- 1” (+/- 25mm).

See Diagram and Instructions Below for Locations (Figure 2)

- 6” from corner & 6” from center line at any mullion at sill, plus 50% support of sill is required, add shims to comply.
- Do not shim at the head of the door.

Hinge Adjustments

Please follow the figure below to adjust the door for proper operation. **(Figure 1)**

Figure 1

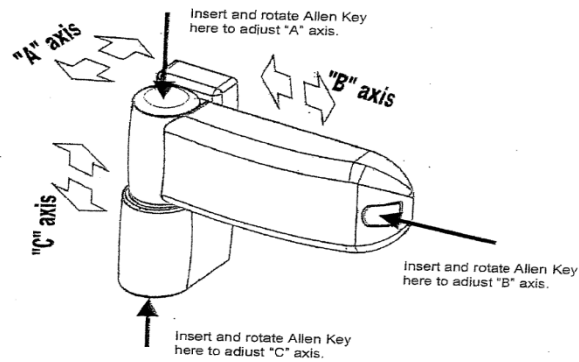
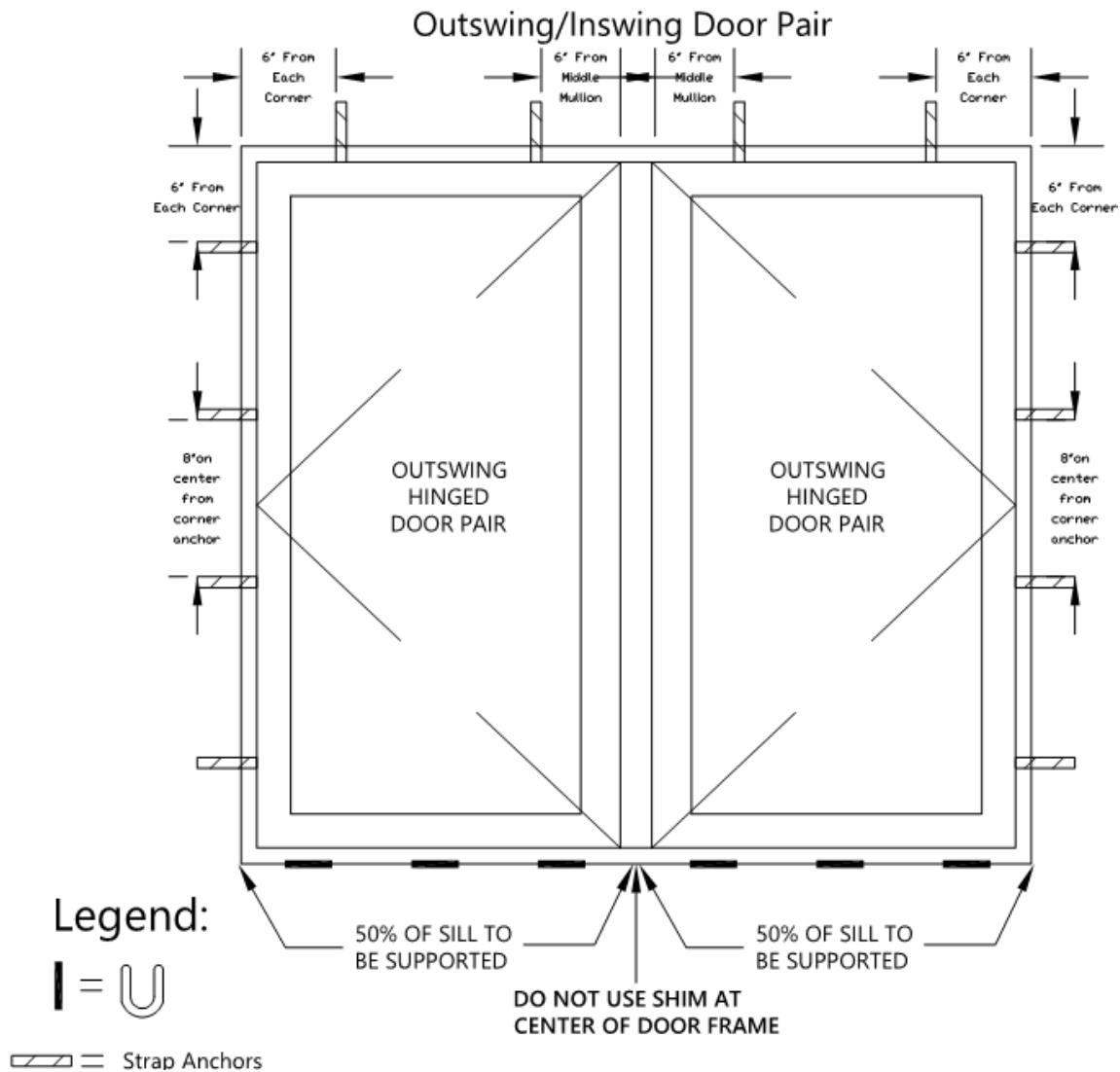
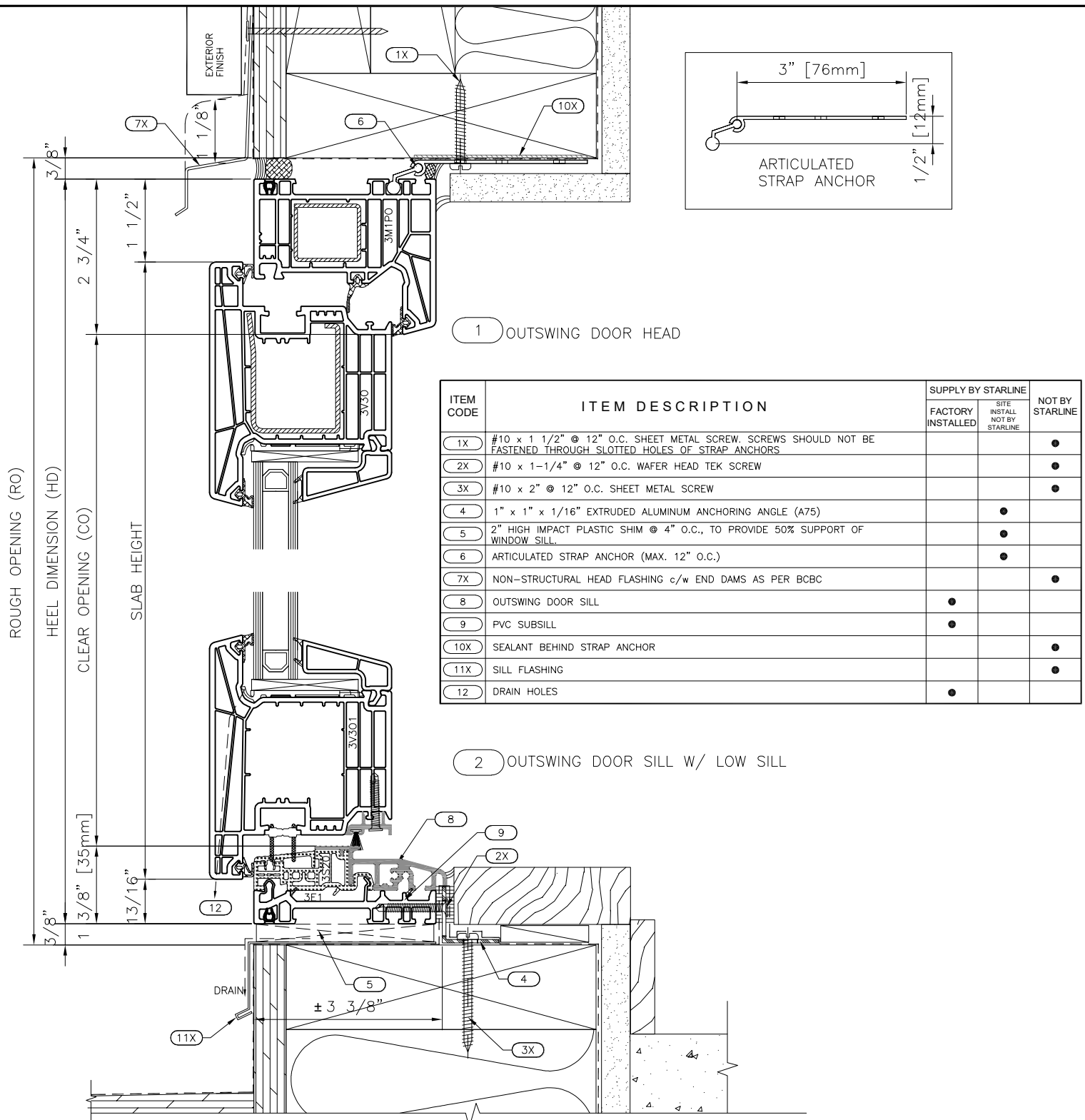


Figure 2**Note:**

- The same spacing and method is to be used on a single outswing/inswing
- In addition to the strap anchors above we recommend one above and below the hinge

3500 EUROSTAR OUTSWING DOOR FASTENING GUIDE - HEAD & SILL

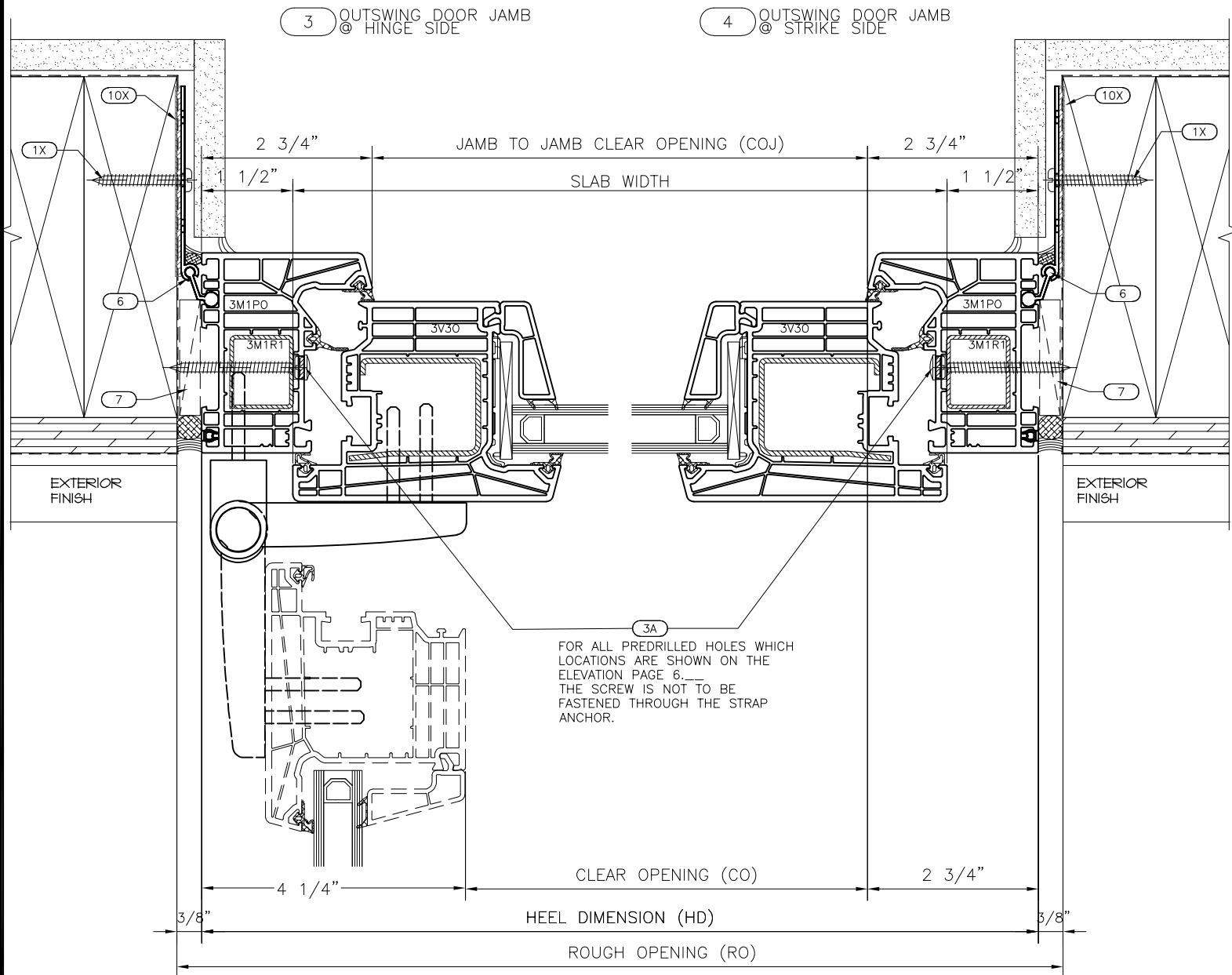


NOTE: STRUCTURAL FASTENING DETAILS DO NOT SUPERCEDE SHOP DRAWINGS AND ARE TO BE USED AS A GENERAL GUIDE ONLY.

ADDITIONAL FASTENING MAY BE REQUIRED FOR OVERSIZED FRAMES OR HEAVIER GLAZING. WHERE INTENDED INSTALLATION METHOD IS SIGNIFICANTLY DIFFERENT, PLEASE CONTACT STARLINE BEFORE YOU BEGIN WORK.

* SCREWS, SHIMS, ETC. ARE NOT SUPPLIED BY STARLINE UNLESS OTHERWISE STATED IN CONTRACT DOCUMENTS.

3500 EUROSTAR OUTSWING DOOR FASTENING GUIDE -JAMBS



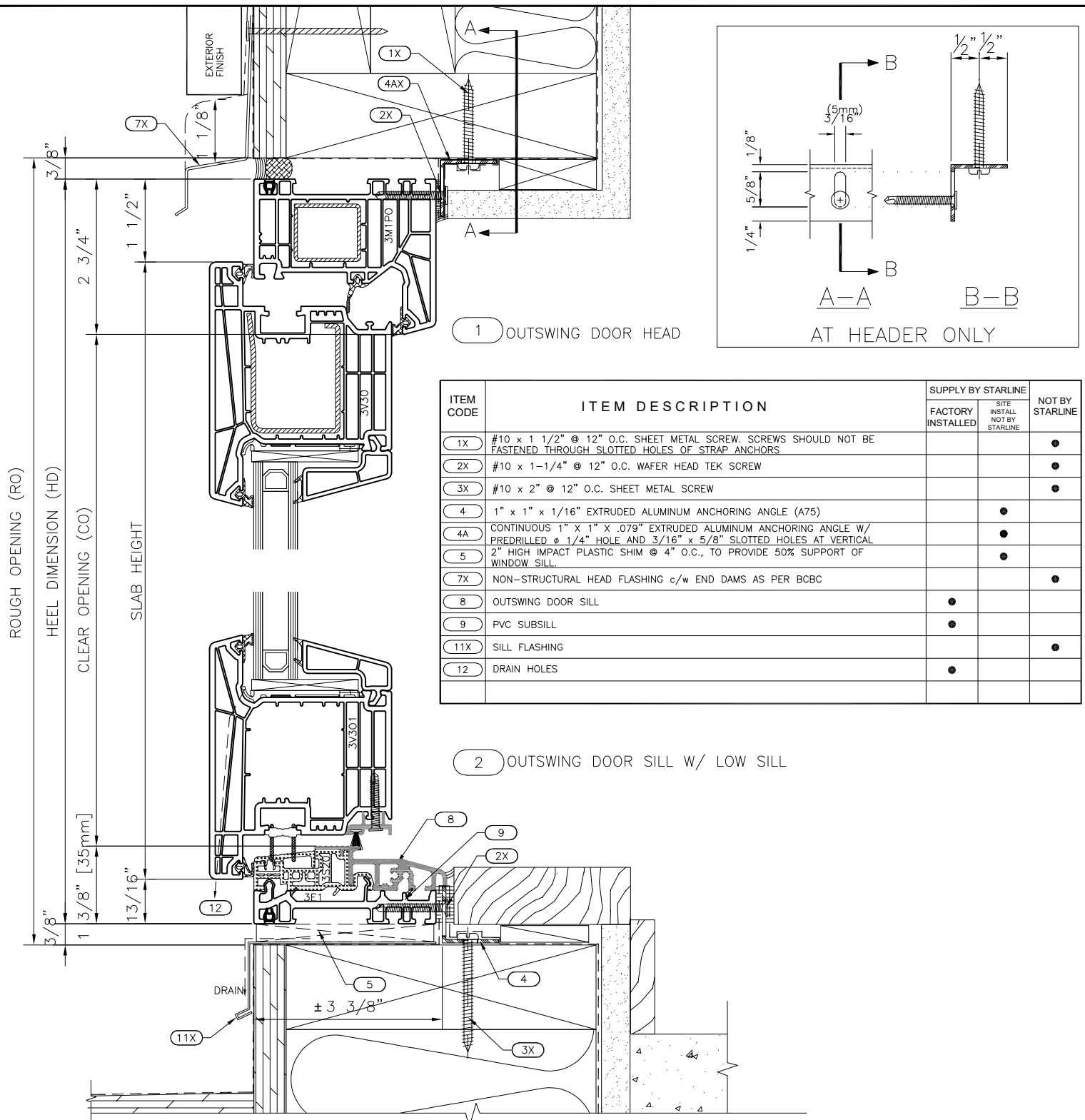
ITEM CODE	ITEM DESCRIPTION	SUPPLY BY STARLINE		NOT BY STARLINE
		FACTORY INSTALLED	SITE INSTALL NOT BY STARLINE	
1X	#10 x 1 1/2" @ 12" O.C. SHEET METAL SCREW. SCREWS SHOULD NOT BE FASTENED THROUGH SLOTTED HOLES OF STRAP ANCHORS			•
3A	#8 x 3" SHEET METAL SCREWS TO BE INSTALLED AT ALL PREDRILLED HOLES		•	
6	ARTICULATED STRAP ANCHOR (MAX. 12" O.C.)		•	
7	INTERMITTENT SHIM @ JAMB		•	
10X	SEALANT BEHIND STRAP ANCHOR			•

NOTE: STRUCTURAL FASTENING DETAILS DO NOT SUPERCEDE SHOP DRAWINGS AND ARE TO BE USED AS A GENERAL GUIDE ONLY.

ADDITIONAL FASTENING MAY BE REQUIRED FOR OVERSIZED FRAMES OR HEAVIER GLAZING. WHERE INTENDED INSTALLATION METHOD IS SIGNIFICANTLY DIFFERENT, PLEASE CONTACT STARLINE BEFORE YOU BEGIN WORK.

* SCREWS, SHIMS, ETC. ARE NOT SUPPLIED BY STARLINE UNLESS OTHERWISE STATED IN CONTRACT DOCUMENTS.

3500 EUROSTAR OUTSWING DOOR FASTENING GUIDE - HEAD & SILL

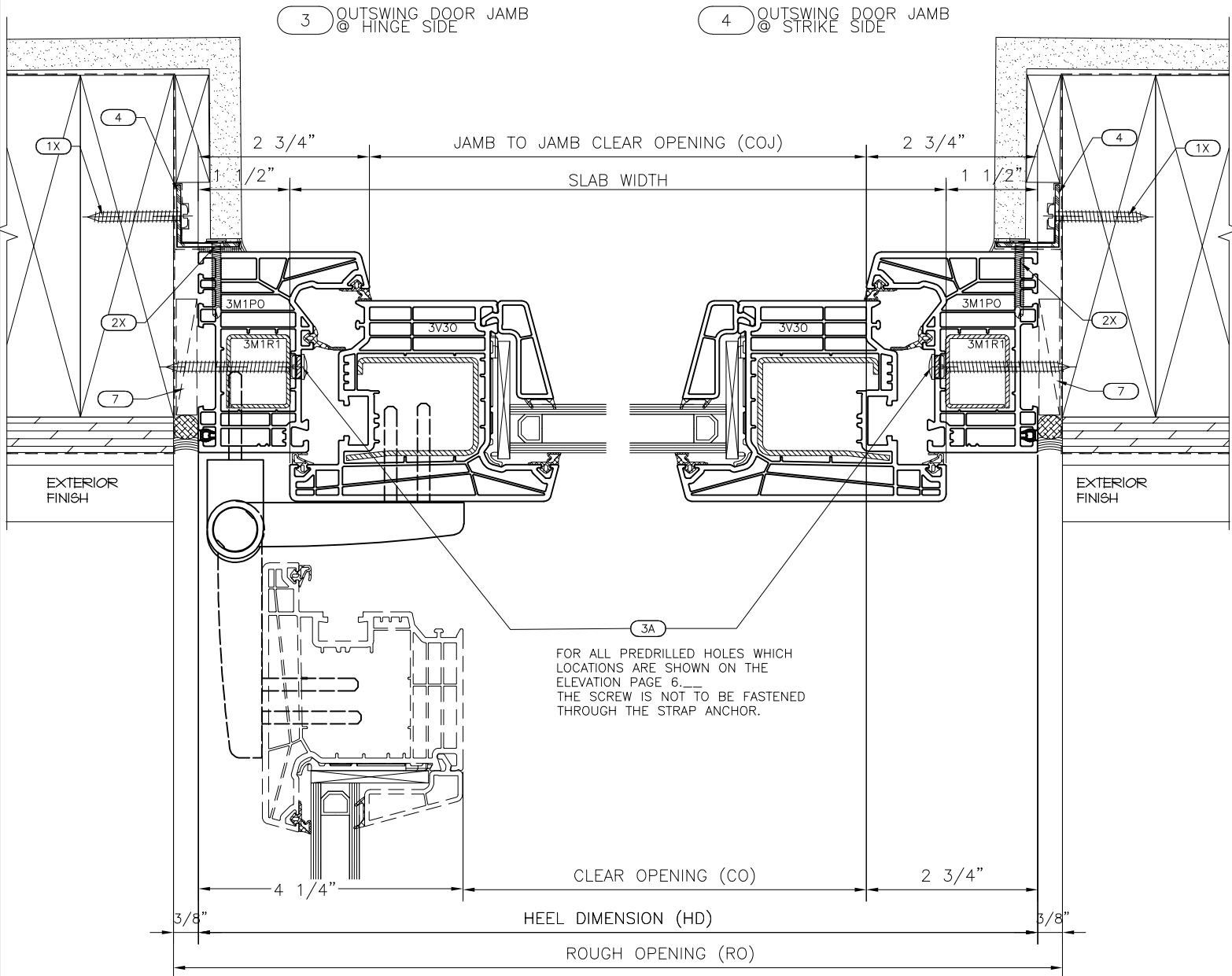


NOTE: STRUCTURAL FASTENING DETAILS DO NOT SUPERCEDE SHOP DRAWINGS AND ARE TO BE USED AS A GENERAL GUIDE ONLY.

ADDITIONAL FASTENING MAY BE REQUIRED FOR OVERSIZED FRAMES OR HEAVIER GLAZING. WHERE INTENDED INSTALLATION METHOD IS SIGNIFICANTLY DIFFERENT, PLEASE CONTACT STARLINE BEFORE YOU BEGIN WORK.

* SCREWS, SHIMS, ETC. ARE NOT SUPPLIED BY STARLINE UNLESS OTHERWISE STATED IN CONTRACT DOCUMENTS.

3500 EUROSTAR OUTSWING DOOR FASTENING GUIDE -JAMBS



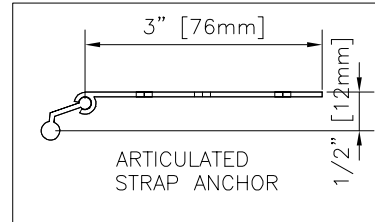
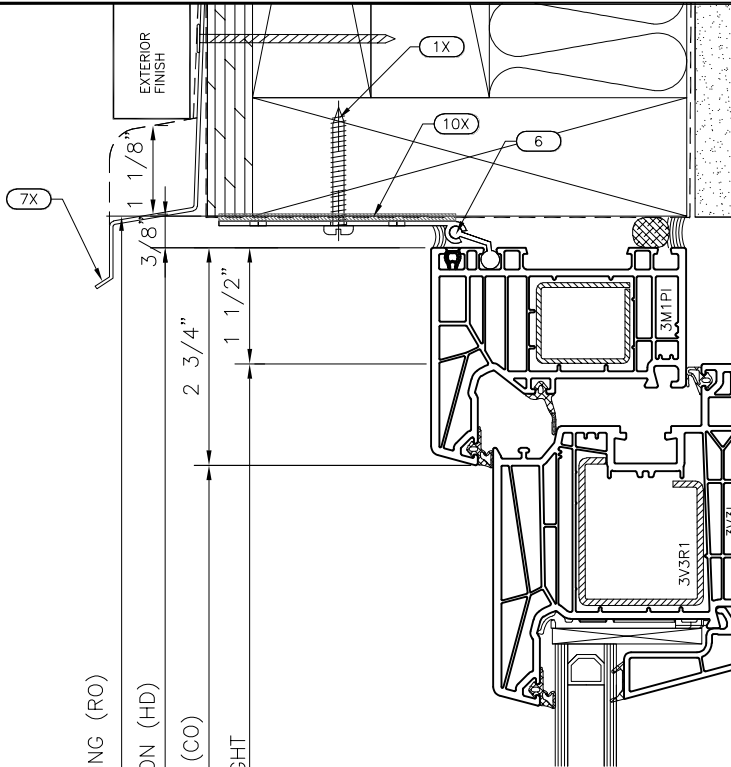
ITEM CODE	ITEM DESCRIPTION	SUPPLY BY STARLINE		NOT BY STARLINE
		FACTORY INSTALLED	SITE INSTALL NOT BY STARLINE	
1X	#10 x 1 1/2" @ 12" O.C. SHEET METAL SCREW. SCREWS SHOULD NOT BE FASTENED THROUGH SLOTTED HOLES OF STRAP ANCHORS			•
2X	#10 x 1-1/4" @ 12" O.C. WAFER HEAD TEK SCREW			•
3A	#8 X 3" SHEET METAL SCREWS TO BE INSTALLED AT ALL PREDRILLED HOLES		•	
4	1" x 1" x 1/16" EXTRUDED ALUMINUM ANCHORING ANGLE (A75)		•	
7	INTERMITTENT SHIM @ JAMB		•	

NOTE: STRUCTURAL FASTENING DETAILS DO NOT SUPERCEDE SHOP DRAWINGS AND ARE TO BE USED AS A GENERAL GUIDE ONLY.

ADDITIONAL FASTENING MAY BE REQUIRED FOR OVERSIZED FRAMES OR HEAVIER GLAZING. WHERE INTENDED INSTALLATION METHOD IS SIGNIFICANTLY DIFFERENT, PLEASE CONTACT STARLINE BEFORE YOU BEGIN WORK.

* SCREWS, SHIMS, ETC. ARE NOT SUPPLIED BY STARLINE UNLESS OTHERWISE STATED IN CONTRACT DOCUMENTS.

3501 EUROSTAR INSWING DOOR FASTENING GUIDE - HEAD & SILL



1 INSWING DOOR HEAD

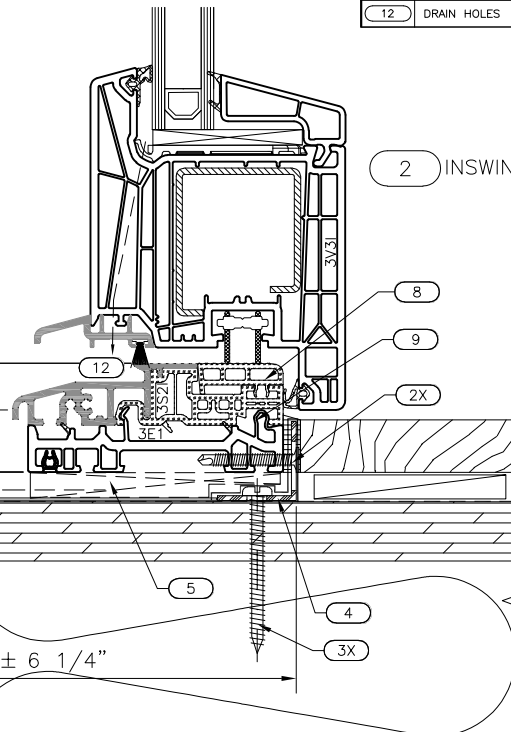
ITEM CODE	ITEM DESCRIPTION	SUPPLY BY STARLINE	
		FACTORY INSTALLED	SITE INSTALL NOT BY STARLINE
1X	#10 x 1 1/2" @ 12" O.C. SHEET METAL SCREW. SCREWS SHOULD NOT BE FASTENED THROUGH SLOTTED HOLES OF STRAP ANCHORS		●
2X	#10 x 1-1/4" @ 12" O.C. WAFER HEAD TEK SCREW		●
3X	#10 x 2" @ 12" O.C. SHEET METAL SCREW		●
4	1" x 1" x 1/16" EXTRUDED ALUMINUM ANCHORING ANGLE (A75)		●
5	2" HIGH IMPACT PLASTIC SHIM @ 4" O.C., TO PROVIDE 50% SUPPORT OF WINDOW SILL.		●
6	ARTICULATED STRAP ANCHOR (MAX. 12" O.C.)		●
7X	HEAD FLASHING		●
8	STANDARD INSWING THRESHOLD	●	
9	PVC SUBSILL	●	
10X	SEALANT BEHIND STRAP ANCHOR		●
11X	SILL FLASHING		●
12	DRAIN HOLES	●	

ROUGH OPENING (RO)

HEEL DIMENSION (HD)

CLEAR OPENING (CO)

SLAB HEIGHT



2 INSWING DOOR SILL W/ LOW SILL

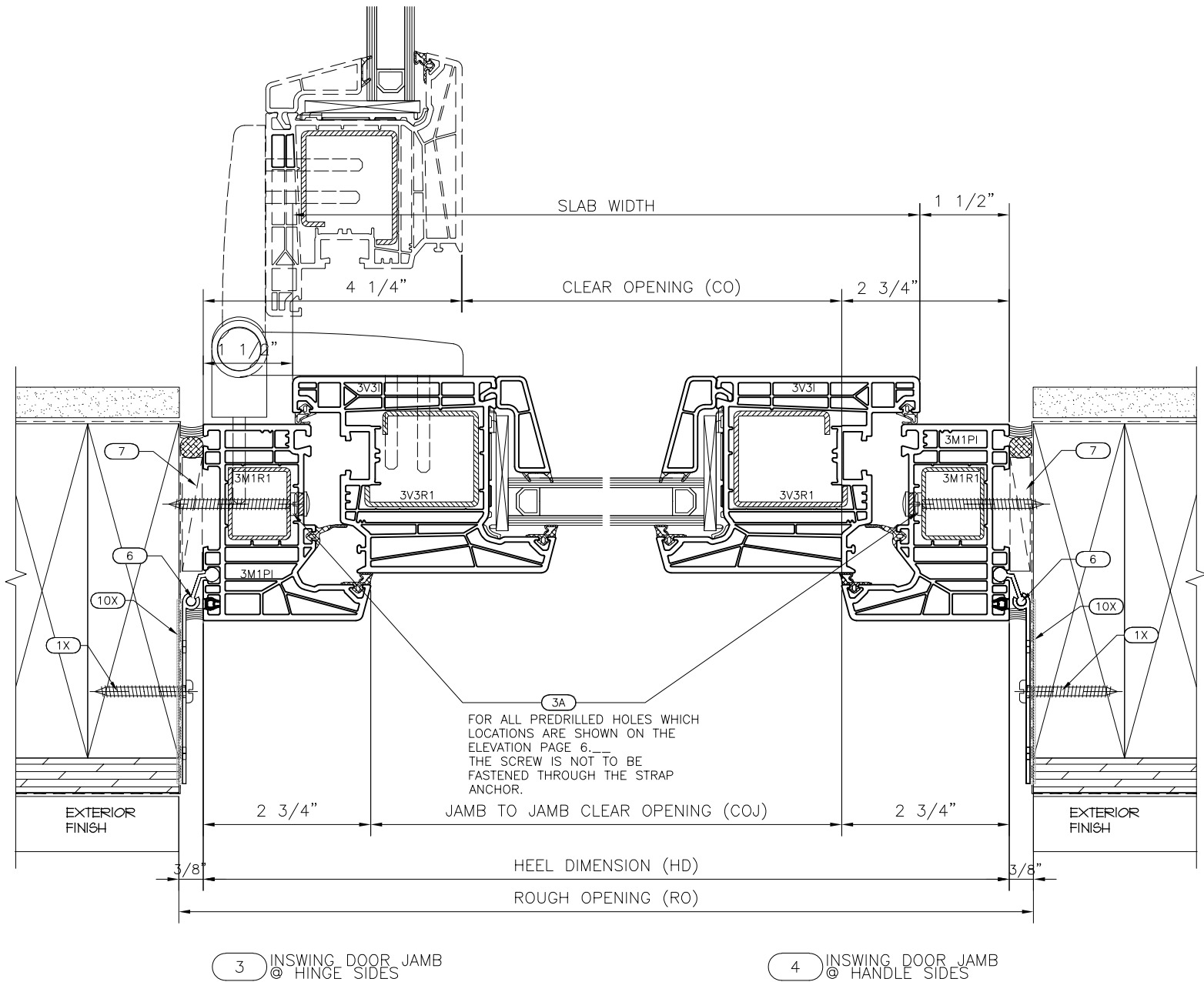
NOTE: STRUCTURAL FASTENING DETAILS DO NOT SUPERCEDE SHOP DRAWINGS AND ARE TO BE USED AS A GENERAL GUIDE ONLY.

ADDITIONAL FASTENING MAY BE REQUIRED FOR OVERSIZED FRAMES OR HEAVIER GLAZING. WHERE INTENDED INSTALLATION METHOD IS SIGNIFICANTLY DIFFERENT, PLEASE CONTACT STARLINE BEFORE YOU BEGIN WORK.

* SCREWS, SHIMS, ETC. ARE NOT SUPPLIED BY STARLINE UNLESS OTHERWISE STATED IN CONTRACT DOCUMENTS.

3501 EUROSTAR INSWING DOOR

FASTENING GUIDE - JAMBS



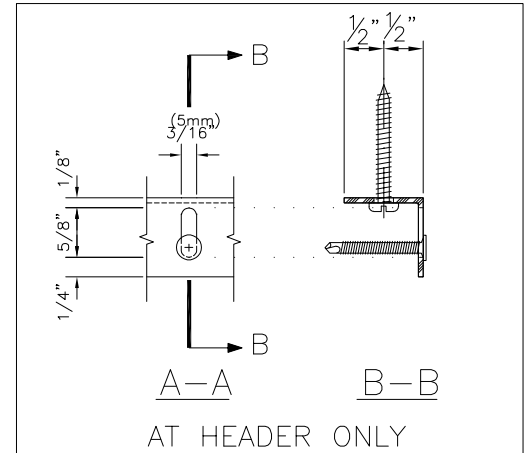
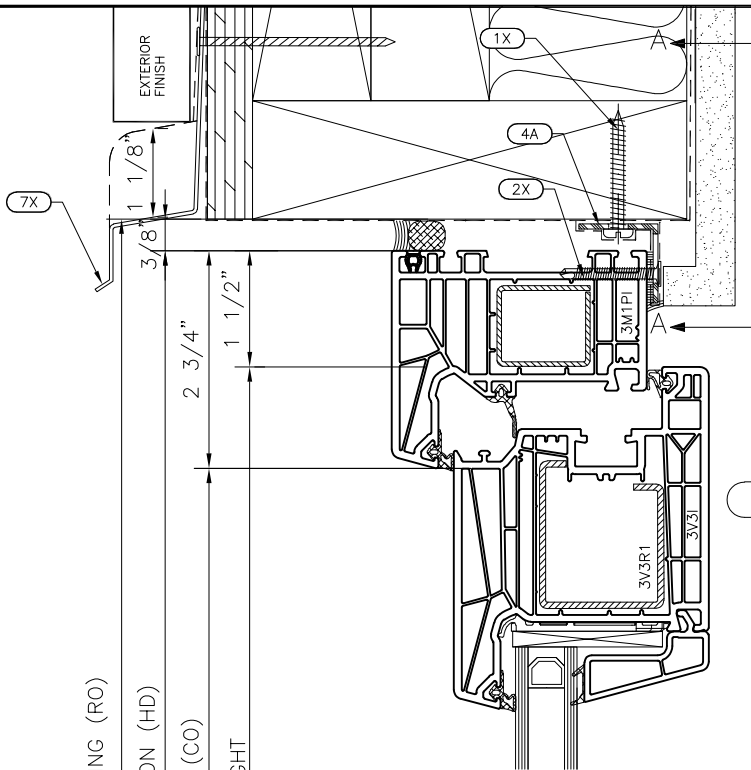
ITEM CODE	ITEM DESCRIPTION	SUPPLY BY STARLINE		
		FACTORY INSTALLED	SITE INSTALL NOT BY STARLINE	NOT BY STARLINE
1X	#10 x 1 1/2" @ 12" O.C. SHEET METAL SCREW. SCREWS SHOULD NOT BE FASTENED THROUGH SLOTTED HOLES OF STRAP ANCHORS			•
3A	#8 x 3" SHEET METAL SCREWS TO BE INSTALLED AT ALL PREDRILLED HOLES		•	
6	ARTICULATED STRAP ANCHOR (MAX. 12" O.C.)		•	
7	INTERMITTENT SHIM @ JAMB		•	
10X	SEALANT BEHIND STRAP ANCHOR			•

NOTE: STRUCTURAL FASTENING DETAILS DO NOT SUPERCEDE SHOP DRAWINGS AND ARE TO BE USED AS A GENERAL GUIDE ONLY.

ADDITIONAL FASTENING MAY BE REQUIRED FOR OVERSIZED FRAMES OR HEAVIER GLAZING. WHERE INTENDED INSTALLATION METHOD IS SIGNIFICANTLY DIFFERENT, PLEASE CONTACT STARLINE BEFORE YOU BEGIN WORK.

* SCREWS, SHIMS, ETC. ARE NOT SUPPLIED BY STARLINE UNLESS OTHERWISE STATED IN CONTRACT DOCUMENTS.

3501 EUROSTAR INSWING DOOR FASTENING GUIDE - HEAD & SILL



1 INSWING DOOR HEAD

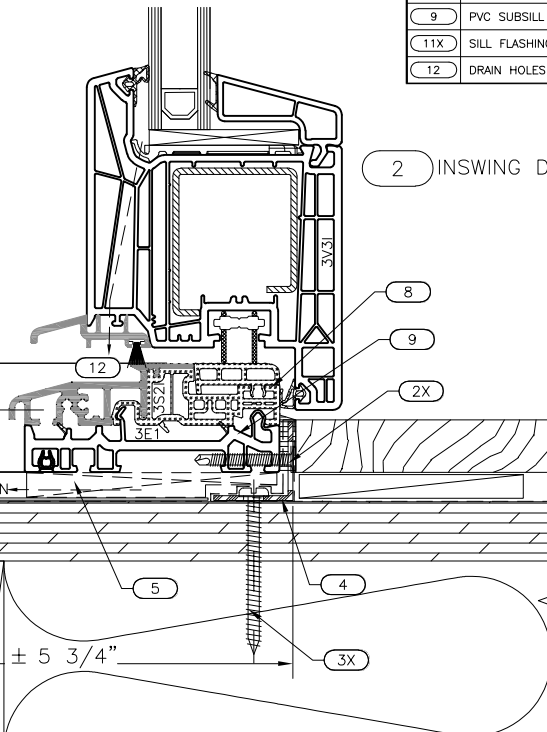
ITEM CODE	ITEM DESCRIPTION	SUPPLY BY STARLINE		
		FACTORY INSTALLED	SITE INSTALL NOT BY STARLINE	NOT BY STARLINE
1X	#10 x 1 1/2" @ 12" O.C. SHEET METAL SCREW. SCREWS SHOULD NOT BE FASTENED THROUGH SLOTTED HOLES OF STRAP ANCHORS			●
2X	#10 x 1-1/4" @ 12" O.C. WAFER HEAD TEK SCREW			●
3X	#10 x 2" @ 12" O.C. SHEET METAL SCREW			●
4	1" x 1" x 1/16" EXTRUDED ALUMINUM ANCHORING ANGLE (A75)		●	
4A	CONTINUOUS 1" X 1" X .079" EXTRUDED ALUMINUM ANCHORING ANGLE W/ PREDRILLED ϕ 1/4" HOLE AND 3/16" x 5/8" SLOTTED HOLES AT VERTICAL		●	
5	2" HIGH IMPACT PLASTIC SHIM @ 4" O.C., TO PROVIDE 50% SUPPORT OF WINDOW SILL		●	
7X	HEAD FLASHING			●
8	STANDARD INSWING THRESHOLD	●		
9	PVC SUBSILL	●		
11X	SILL FLASHING			●
12	DRAIN HOLES	●		

ROUGH OPENING (RO)

HEEL DIMENSION (HD)

CLEAR OPENING (CO)

SLAB HEIGHT



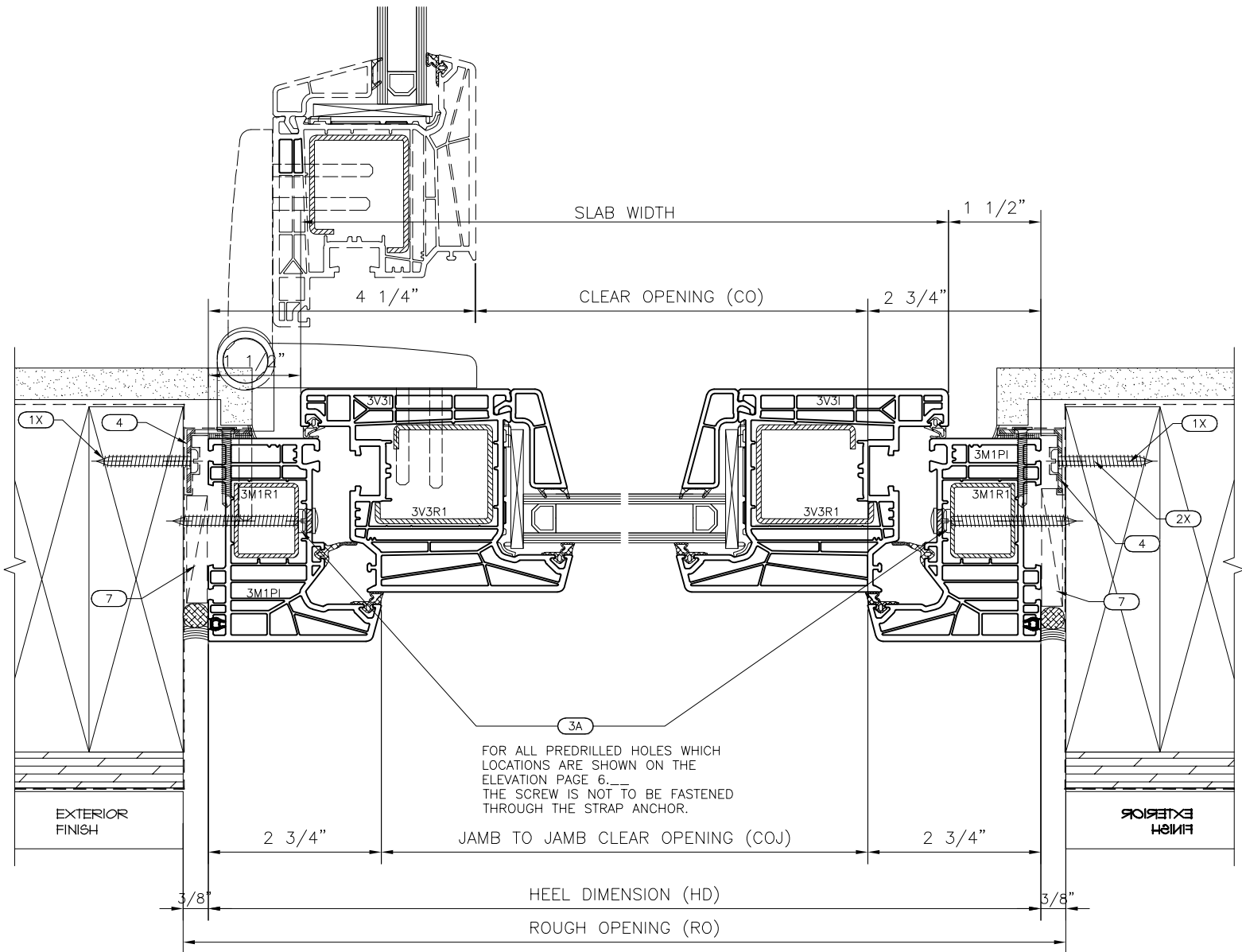
2 INSWING DOOR SILL W/ LOW SILL

NOTE: STRUCTURAL FASTENING DETAILS DO NOT SUPERCEDE SHOP DRAWINGS AND ARE TO BE USED AS A GENERAL GUIDE ONLY.

ADDITIONAL FASTENING MAY BE REQUIRED FOR OVERSIZED FRAMES OR HEAVIER GLAZING. WHERE INTENDED INSTALLATION METHOD IS SIGNIFICANTLY DIFFERENT, PLEASE CONTACT STARLINE BEFORE YOU BEGIN WORK.

* SCREWS, SHIMS, ETC. ARE NOT SUPPLIED BY STARLINE UNLESS OTHERWISE STATED IN CONTRACT DOCUMENTS.

3501 EUROSTAR INSWING DOOR FASTENING GUIDE - JAMBS



3 INSWING DOOR JAMB
@ HINGE SIDES

4 INSWING DOOR JAMB
@ HANDLE SIDES

ITEM CODE	ITEM DESCRIPTION	SUPPLY BY STARLINE		
		FACTORY INSTALLED	SITE INSTALL NOT BY STARLINE	NOT BY STARLINE
1X	#10 x 1 1/2" @ 12" O.C. SHEET METAL SCREW. SCREWS SHOULD NOT BE FASTENED THROUGH SLOTTED HOLES OF STRAP ANCHORS			•
2X	#10 x 1-1/4" @ 12" O.C. WAFER HEAD TEK SCREW			•
3A	#8 X 3" SHEET METAL SCREWS TO BE INSTALLED AT ALL PREDRILLED HOLES		•	
4	1" x 1" x 1/16" EXTRUDED ALUMINUM ANCHORING ANGLE (A75)		•	
7	INTERMITTENT SHIM @ JAMB		•	

NOTE: STRUCTURAL FASTENING DETAILS DO NOT SUPERCEDE SHOP DRAWINGS AND ARE TO BE USED AS A GENERAL GUIDE ONLY.

ADDITIONAL FASTENING MAY BE REQUIRED FOR OVERSIZED FRAMES OR HEAVIER GLAZING. WHERE INTENDED INSTALLATION METHOD IS SIGNIFICANTLY DIFFERENT, PLEASE CONTACT STARLINE BEFORE YOU BEGIN WORK.

* SCREWS, SHIMS, ETC. ARE NOT SUPPLIED BY STARLINE UNLESS OTHERWISE STATED IN CONTRACT DOCUMENTS.